

1881

TRANSPACIFIC MAIL

OCEANIC STEAMSHIP CO. Hawaiian Steamer Zealandia  
San Francisco to Honolulu

6¢ Treaty Rate, effective July 1870 to January 1882



B.1897



March 30, 1891. Letter posted at Boston with 6¢ Treaty rate made up of Bank Note 3¢ plus 3¢ stamped envelope cancelled by the Boston negative A. Transit backstamp at Boston. Pacific mail went on to New York for make-up by rail to San Francisco.

April 6. Arrival backstamp at San Francisco.



Daily Alta California: Sailed April 7, 1891. Haw. steamer Zealandia, Van Oterendorp, Honolulu.

April 18. Docket notes arrival at Honolulu.

1893

TRANSPACIFIC MAIL  
OCEANIC STEAMSHIP CO.  
a.k.a. Spreckles Line  
Honolulu to Boston via San Francisco

S. S. Australia



March 29, 1893. Station 1 canceller at Honolulu obliterates 5¢ King Kamehameha V Issue of 1882 paying the U.P.U. rate. Hawaii became a U.P.U. member in January 1882.

March 30. Steamer Australia departed from Honolulu for San Francisco.



The Examiner, San Francisco, April 6, 1893. Arrived San Francisco Wednesday April 5, stmr. Australia, Houdlette, 6 das 19 hrs from Honolulu, passengers and mdse to J.D. Spreckles & Bros.

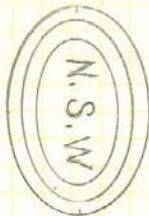
San Francisco arrival backstamp.



April 10. Arrival backstamp at Boston. Usual 5 day transcontinental transit time.

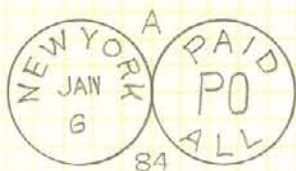
1883-84

TRANSPACIFIC MAIL  
NEW SOUTH WALES TO U.S. VIA SAN FRANCISCO  
S.S. Zealandia OCEANIC STEAMSHIP CO.



December 6, 1883. Paid letter at Sydney, New South Wales paid by the 6d. Issue of 1882, endorsed: Via "Frisco". A rate of 6 pence was paid, held equivalent to the U.S. rate of 10¢ of June 1870 to the Australian States. The Australian States did not become members of the U.P.U. until August 1891. Handstamp noted "PAID ALL."

The steamer Zealandia departed from Sydney this date.



San Francisco Examiner. Arrived San Francisco December 31, 1883, Br. stmr. Zelandia (sic.), Webber, 24 days from Sydney via Honolulu 7 days to Williams, Diamond & Co.

January 6, 1884. New York arrival backstamp.

1886

TRANSPACIFIC MAIL

OCEANIC STEAMSHIP COMPANY S.S. George W. Elder  
a.k.a. Spreckles Line

New York to Honolulu via San Francisco



Feb. 13, 1886. Postal card much overpaid at 6¢ by Bank Note Issues (plus 1¢ postal card). Hawaii joined the U.P.U. on Jan. 1, 1882, when the letter rate was 5¢. This card is addressed to Honolulu, Sandwich Islands.

Feb. 19. Transit postmark at San Francisco.

Daily Examiner, San Francisco, Feb. 18:

OCEANIC STEAMSHIP COMPANY  
carrying United States, Hawaiian and Colonial Mails  
WILL LEAVE THE COMPANY'S WHARF, corner Stuart and  
Harrison Sts. FOR HONOLULU

Geo. W. Elder.....February 27th.

March 7. Honolulu arrival backstamp.



1887

OCEANIC STEAMSHIP CO.

S.S. Alameda

U.S. to New Zealand

12¢ Treaty Rate via S. Francisco

Effective Dec. 1870 to Oct. 1891.



March 20, 1887. Letter paid at Sanford, Florida at the 12¢ Treaty rate via San Francisco by a 10¢ American Bank Note (re-engraved), Issue of April 1882 and a 2¢ red brown, Issue of Oct. 1883. Mail went by rail to New York for connection to the transcontinental rail to the West Coast. Backstamp at New York March 22.

POST OFFICE NOTICE (N.Y. Times)

Mails for Australia, New-Zealand, Sandwich, Fiji and Samoan Islands per steamship Alameda (from San Francisco) close here April 1 at 4 P.M. (or on arrival at New-York of steamship Germanic with British mails for Australia). (N.B.: Arrived April 2.)

March 29. Arrival backstamp at San Francisco.

Advertisement per Daily Alta California:

OCEANIC STEAMSHIP COMPANY

Carrying United States, Hawaiian and Colonial Mail Will leave the Company's Wharf, corner Stuart & Folsom Sts. For: HONOLULU, AUCKLAND and SYDNEY, Without Change. The Magnificent 3,000 ton Iron Steamer ALAMEDA, Friday April 8 at 2 P.M. or Immediately on Arrival of the English Mails.



2

April 9, Alameda sailed day late because of Germanic delay at N.Y.

April 30. Arrival Auckland, N.Z. Letter forwarded to Christchurch, 2d. inland postage charged.

1887

TRANSPACIFIC MAIL  
VICTORIA TO U.S. VIA SAN FRANCISCO

S.S. Zealandia

OCEANIC STEAMSHIP CO.  
a/k/a Spreckles Line



October 4, 1887. This letter was posted at Melbourne, Victoria and directed: Via San Francisco. A rate of six pence was paid, held equivalent to the U.S. rate of 10¢ of June 1870 to the Australian States. The Australian States did not become members of the U.P.U. until August 1891. Stamp is the 6d. ultramarine, Issue of 1886-87.

October 5. S.S. Zealandia sailed from Sydney with the U.S. mails.

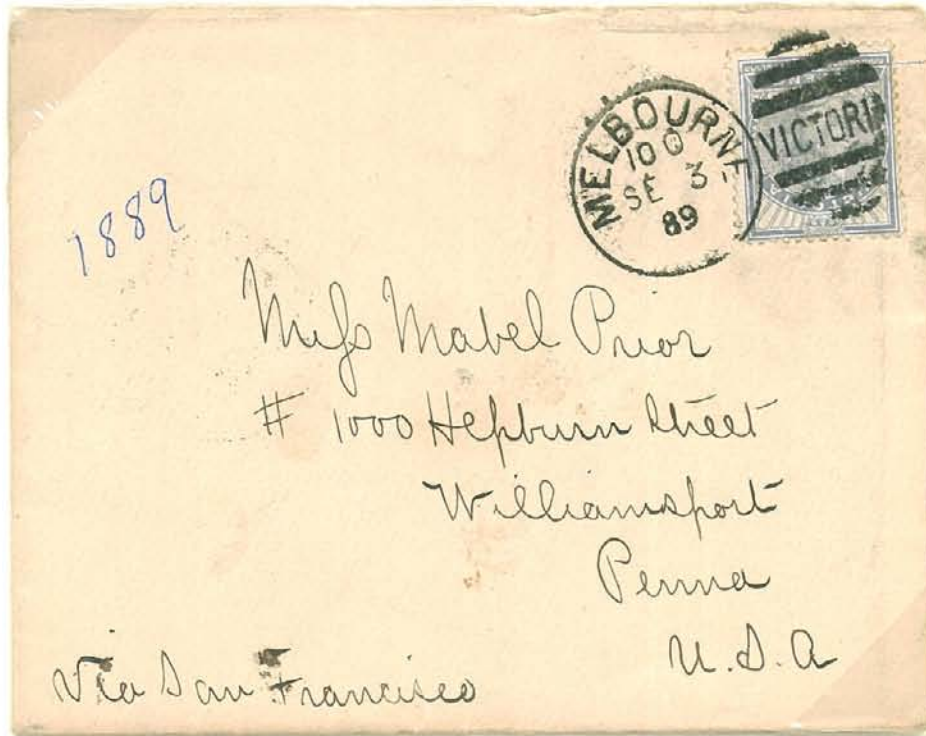
October 28. San Francisco Examiner: Arrived Haw Steamer Zealandia, Van Oterendorp, 23 ds fm Sydney, via Honolulu to J.D. Spreckles & Bros.

November 3. Transit at Chicago, Foreign Department. A textbook strike in purple.

November 4. Vermillion, Ohio arrival backstamp.

1889

TRANSPACIFIC MAIL  
VICTORIA TO U.S. VIA SAN FRANCISCO  
S.S. Alameda OCEANIC STEAMSHIP CO.  
a/k/a Spreckles Line



September 3, 1889. A letter posted at Melbourne, Victoria, Australia and directed: Via San Francisco. It is paid at the rate of six pence, equivalent to the U.S. rate of 10¢ of June 1870 to the Australian States. The latter did not become members of the U.P.U. until August 1891. Stamp is the 6d. ultramarine, Issue of 1886-87.

September 4. S.S. Alameda sailed from Sydney with the U.S. mails via San Francisco.



San Francisco Examiner, Sunday Sept. 29. Arr. Sept. 28. Stmr. Alameda, Morse, 24 ds. 10½ hrs. from Sydney, via Honolulu, 6 ds. 20 hrs.; pass. and mdse. to J.D. Spreckles & Bros.



Arrival backstamp at San Francisco Sept. 28.

October 4. Arrival backstamp at Williamsport, Penn., usual 5-6 day transcontinental transit by rail.

1890

TRANSPACIFIC MAIL

VICTORIA TO U.S. VIA SAN FRANCISCO

S.S. Alameda

OCEANIC STEAMSHIP CO.

a/k/a Spreckles Line



February 18, 1890. Letter posted at Melbourne, Victoria, one of the Australian States. It was directed: Via San Francisco. A rate of six pence was paid, equivalent to the U.S. rate of 10¢ of June 1870. The Australian States did not become members of the U.P.U. until August 1891. Stamp is the 6d. ultramarine, Issue of 1886-87.

February 19. Steamer Alameda sailed from Sydney with the U.S. mails.



March 15. San Francisco Examiner, March 16. Arrived S.F. March 15, stmr. Alameda, Morse, 24 ds. 15 hrs. 15 min. fm Sydney, via Honolulu 6 ds. and 30 mins, pass. and mdse to J.D. Spreckles & Bros.



March 21. Arrival backstamp at Williamsport, Penn. Usual 5-6 day transcontinental transit time.



1890

TRANSPACIFIC MAIL

VICTORIA TO U.S. VIA SAN FRANCISCO

S.S. Zealandia

OCEANIC STEAMSHIP CO.

a/k/a Spreckles Line



April 11, 1890. Letter posted at Melbourne, Victoria, one of the Australian States, directed: Via San Francisco. A rate of six pence was paid, equivalent to the U.S. rate of 10¢ of June 1870, to the Australian States. The Australian States did not become members of the U.P.U. until August 1891. Stamp is the 6d. ultra-marine Issue of 1886-87.

April 16. S.S. Zealandia departed from Sydney.



San Francisco Examiner, Sunday, May 11, 1890. Arrived May 10, Haw. stmr. Zealandia, Van Orterendorp, 24 ds. fm Sydney, via Honolulu 7 ds., passengers and mdse to J.D. Spreckles & Bros.

Arrival backstamp at San Francisco.



May 16. Arrival backstamp at Williamsport, Penn. Usual 5 day transcontinental passage by rail.

1890

TRANSPACIFIC MAIL  
OCEANIC STEAMSHIP CO. S.S. Alameda



BRISBANE  
19  
AU 4  
90  
QUEENSLAND

Q

PAID  
ALL

August 4, 1890. A triple rated letter paid at Brisbane, Queensland at the 6d. (12¢) direct sea mail rate per ½-oz., effective from January 1, 1876 to October 1, 1891, when Queensland entered the U.P.U. Here the rate is paid by the 6d. and one shilling Issues

of 1882-83 to total 1sh.6d. Letter is endorsed: Via 'Frisco, and marked PAID/ALL.

August 6. S.S. Alameda of the Oceanic Steamship Co. departed from Sydney.

BOSTON  
SEP 5  
1890  
PAID

San Francisco Examiner. Arrived August 30, Stmr. Alameda, Morse, 24 ds. 9 hours 5 min. fm Sydney, via Honolulu 6 ds. and 14 hrs; passengers and mdse. to J.D. Spreckles & Bros.

Mail was forwarded east by rail.

September 5. Boston Foreign Department arrival backstamp. Usual 5-6 day transit time from the west to the east coast.

1891

TRANSPACIFIC MAIL

OCEANIC STEAMSHIP CO.

S.S. Alameda

6d. Treaty Rate from New South Wales to U.S. via S. Francisco  
Effective Feb. 1874 to August 1891.



April 18, 1891. The 6d. (12¢ U.S.) Treaty rate paid at Melbourne, Victoria via Sydney, New South Wales by a rather spectacular strip of 6 of the 1d. Issue of 1890. The envelope illustrates the "Quick Meal Gasoline Stove." One wonders about the safety of this device (Quick and "last" meal?)

April 20. S.S. Alameda left Sydney this date.



May 14. Daily Alta California: Arrived San Francisco May 14, 1891, Stmr Alameda, Morse, 24 days 14 hours 40 minutes from Sydney via Honolulu 6 days 1 hour 23 minutes, pass. and mdse to J.D. Spreckles & Bros.

San Francisco transit backstamp.



May 19. Arrival backstamp at Sterling, Kansas.

1892

TRANSPACIFIC MAIL

OCEANIC STEAMSHIP CO. a.k.a. Spreckles Line.

S.S. Australia, Honolulu to San Francisco

North German Lloyd, S.S. Saale, N.Y. to Bremerhaven



January 30, 1892. U.P.U. rate paid by the 5¢ King Kamehameha Issue of 1882, cancelled by the circular date stamp of Spreckelsville on Maui Island. (Mayer et al, "Postal Markings of Hawaii", Type 259.04 with target killer 111.) This

was a village just east of Kahului harbor and cancellations are recorded from 1883-1900.

January 31. Transit at Honolulu. The S.S. Australia sailed from this port February 2 for San Francisco.



Backstamp Feb. 9. San Francisco Examiner, Feb. 10. Arrived stmr. Australia, Houdiette, 7 days from Honolulu to J.D. Spreckles & Bros. Mail went trans-continental by rail to New York, a trip of about five days.

26 2  
7-8N  
1

Feb. 16. S.S. Saale sailed from N.Y. at 8 AM.

Feb. 26. Arrival backstamp at Bremerhaven, port city of Bremen. N.Y. Times: BY CABLE LONDON Feb. 26 - North

German Lloyd SS Saale, Capt. Ringk, from New-York Feb. 16 via Southampton, arrived at Bremerhaven at 2 PM to-day.

1892

TRANSPACIFIC MAIL

OCEANIC STEAMSHIP CO. a.k.a. Spreckles Line

S.S. Australia, Honolulu to San Francisco

General Transatlantic Line, S.S. LaGascogne, New York to Havre



June 22, 1892. U.P.U. rate to member countries paid at Honolulu Station 2 by 1¢ Princess Likelike Issue of 1883 and a pair of the 2¢ Queen Liliuokalani Issue of 1891.

June 22. Steamer Australia departed from Honolulu for San Francisco.

June 28. San Francisco Examiner. Arrived Tuesday June 28 Stmr. Australia, Houdiette, Gds. 18hrs from Honolulu, passengers and mdse to J.D. Spreckles & Bros.

Advertisement in Examiner:

OCEAN STEAMSHIP COMPANY

The splendid 3,000 ton steamers of this line, carrying United States, Hawaiian and Colonial mails sail from Folsom-street wharf as under:

FOR HONOLULU ONLY

SS AUSTRALIA.....Tuesday July 5, 1892 at 2 PM

FOR HONOLULU, APIA, AUCKLAND AND SYDNEY DIRECT

SS ALMEDA.....Friday July 22, 1892 at 2 PM.

July 2. Sailed from New York for Havre, La Gascogne

July 10. London. General Transatlantic Line SS La Gascogne, Capt. Santelli from New-York July 2 arrived at Havre to-day.

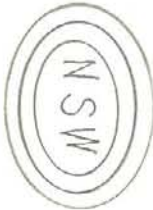
July 11. Paris arrival backstamp.



1893

TRANSPACIFIC MAIL  
OCEANIC STEAMSHIP CO.

S.S. Alameda

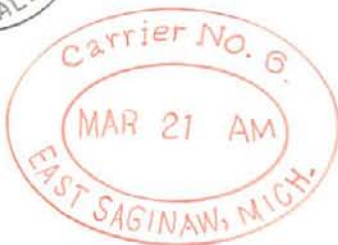


Feb. 20, 1893. Letter paid at Sydney, New South Wales at the 2½d. U.P.U. rate by a pair of the one penny Centenary Issue of 1888, perf. 12 and a ha' penny slate, perf. 11 x 11½, Issue of 1892. The S.S. Alameda departed from Sydney Feb. 21.

London Times, TUES., Feb. 28. The Oceanic Company's s. ALAMEDA left Wellington, N.Z. at midnight on Saturday (Feb. 25) with the Australian and New Zealand mails via San Francisco.



March 17. Arrival backstamp at San Francisco. The Examiner, San Francisco, Fri., Mar. 17. Arrived Thurs. March 16, Stmr. Alameda, Morse, 24 ds., 10hs. 23 mins. fm Sydney, via Honolulu, 6ds., 9 hs., 28 mins. to J.D. Spreckles & Bros.



March 21. Backstamp of Carrier No. 6 at East Saginaw, Michigan.

1893

TRANSPACIFIC MAIL  
OCEANIC STEAMSHIP CO. a.k.a. Spreckles Line  
S.S. Australia, Honolulu to San Francisco



May 28, 1893. U.P.U. rate paid by the Hawaiian 5¢ Issue of 1882. Envelope of the Oahu Railway & Land Company. The letter also bears the Company Ticket Office backstamp. The writer is worried about the U.S. annexing the Hawaiian Islands. He notes that the "Australia"

leaves to-day, so he endorsed the letter: "Australia."

May 25. S.S. Australia of the Oceanic Steamship Co. departed from Honolulu.

San Francisco Examiner. Arrived May 31, Stmr. Australia, Houdiette, 6 ds 4½ hours fm. Honolulu, passengers and merchandise to J.D. Spreckles & Bros.



May 31. San Francisco transit backstamp.

Honolulu  
May 24/93

Dear Grace:

I know I owe you a letter, for on the last mail but one I received two welcome letters from your royal highness. The Australia leaves to-day and so will send you a few lines by it, although there is scarcely any thing to write about. Last night about 200 members of the annexation club went up to bid goodbye to J.S. Stevens the ex-U.S. Minister who leaves with his family on the Steamer to-day, we formed at the Club rooms and headed by the band marched up to his house, with fireworks going off all the way. When we got to the house we all went in and shook hands with the old gentleman, he afterwards came out on the balcony and made us a farewell speech. All the respectable people here have lots of aloha for him and we are sorry to lose him. Hope the new minister, Blount, will do as much for us. Why don't you folks in the U.S. get a sudden move on you an annex us instead of holding back and making us all worry and wonder where we are at. If you dont want us tell us so and then we can get help elsewhere, but if the U.S. refuse to take these Islands the day will come when they will regret it and dont you forget it. Suppose Dus is a full fledged married man by this time. Hope he got a nice girl - he deserved one. Charlie I guess will be married soon, and the I'll be the bachelor of the family. Well I dont mind, am in no hurry to be tied up. I'm young yet and can stay single for a good many years to come. How are you coming on in this respect? Will I find you a Mrs. when I return home? You dont write me anything about your fellows. You spoke about a man who lives near you wanting to come out here to work and live. At the present time, for a man wanting to find work, this is a very good place to stay away from - if we get annexation thing will be different and there will probably be a big rush here and new enterprises opened up, but I could not advise anyone to come here except to see the beauties of the Island, at present we are having a good deal of tourist travel now and that is just what we like and want, for they leave a considerable money in the place.

Wish I was going on to see the Worlds fair and all the folks at home, but dont see how I can do it this year. My aloha to all the folks - with aloha nui to yourself.

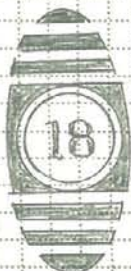
Yours

Fred



1895

TRANSPACIFIC MAIL  
OCEANIC STEAMSHIP CO. a.k.a. Spreckles Line  
S.S. Australia, San Francisco to Honolulu



October 15, 1895. Letter paid at San Francisco at the U.P.U. rate of 5¢ to member countries by a pair of the 2¢ Issue of 1895, carmine Type III, and 1¢ blue. Letter is addressed to Kohala on the big island of Hawaii.

San Francisco Examiner: Cleared and sailed Oct. 15, Stmr. Australia, Houdiette, J.D. Spreckles & Bros. Co.

October 21. The Australia arrived at Honolulu where the Station 2 duplex mark was struck as a receiving backstamp. Letter was sent onward by local steamer servicing the outer islands.



October 25. Receiving backstamp at Kohala.

1895

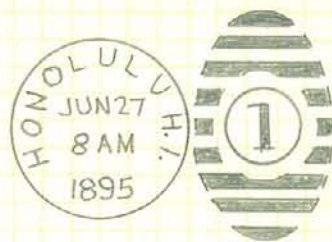
TRANSPACIFIC MAIL

OCEANIC STEAMSHIP CO.

S.S. Alameda

a.k.a. Spreckles Line

Sydney to San Francisco via Honolulu



June 27, 1895. Hawaiian postal card (UX9), 2 cents international rate, posted at Honolulu, Station No. 1 duplex cancels the card. S.S. Alameda of the Oceanic Steamship Co. touched at Honolulu June 28 en route to San Francisco from Sydney. This card went aboard her at Honolulu.

The Examiner, San Francisco, Thursday, July 4. Arrived S.F. July 3, 1895. Steamer Alameda, Morse, 23 da 19 hrs 35 mins from Sydney, via Honolulu 6 ds 48 mins, passengers and mdse to J.D. Spreckles & Bros.

Postal card informs John that the writer Rudolph is about to catch a small steamer for San Francisco to-day (June 27th) at nine.



1895

TRANSPACIFIC MAIL

OCEANIC STEAMSHIP CO.

S.S. Australia



October 24, 1895. A printed reply card from an early Hawaiian Island stamp dealer, A.F. Cooke, to another dealer in Chelsea, Mass. Stamp dealing was a side line for Mr. Cooke, as his purple stamp on the face of the card says, "ALL KINDS OF FERTILIZERS." Posted at Honolulu, the terminus for the Oceanic Steamship Co.'s regular Honolulu to San Francisco run. Australia was in this service from 1886-1901. Station No. 1 duplex cancels the card.

November 2. The Examiner, San Francisco, Steamer due to arrive at S.F.: Australia from Honolulu, Nov. 2. San Francisco transit stamp corroborates arrival date of the Australia on Nov. 2.



November 8.  
Chelsea Station,  
Mass., arrival  
date stamp.

HONOLULU, H. I. *Oct 24* 1895

DEAR SIR:—Yours of *Sept 24* is received. I am constantly receiving letters concerning Hawaiian Stamps. While I am NOT a "regular dealer" I am interested in a few varieties of Island Stamps, and offer them as per "ads." I can not assume to fill any orders for SINGLE STAMPS unless accompanied with the cash at catalogue prices. (Do not send any one and two cent U. S. Stamps.)

Established firms or dealers may expect replies to definite orders or offers. FOREIGN POSTAGE IS 5 CENTS AND NOT 2 CENTS. The particular stamps you want, I will send on the receipt of the following prices, if received before

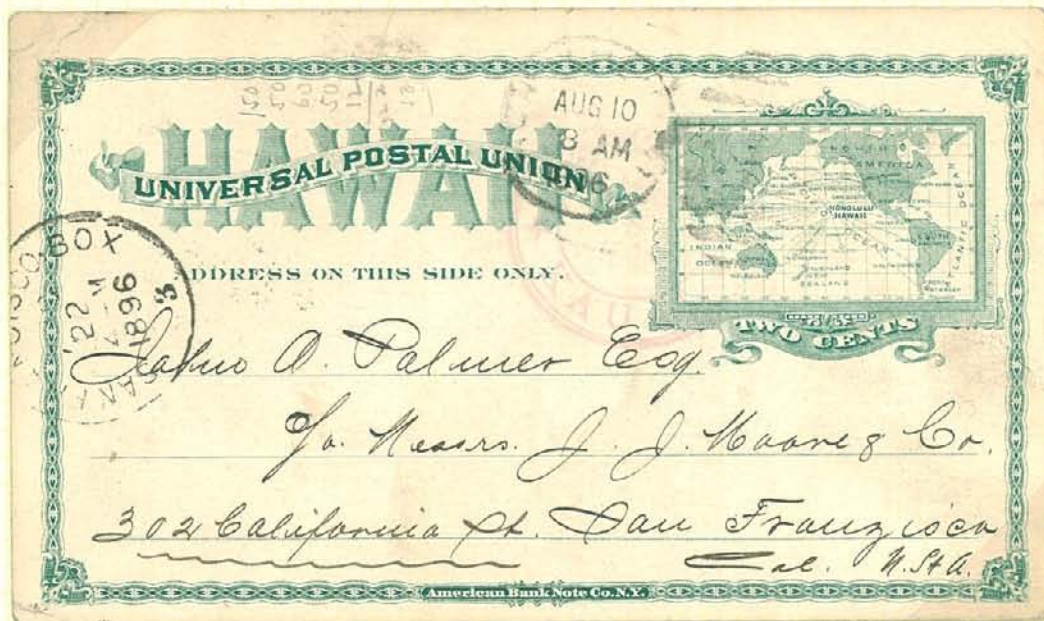
*Jan 1 '96. Do not care to establish any agency just yet. Will fill orders as above, for a time. Orders of 20-40% off.*

Yours truly, A. F. COOKE.

1896

TRANSPACIFIC MAIL  
OCEANIC STEAMSHIP CO. S.S. Australia

Built 1875 by J. Elder & Co., Glasgow. 2755 tons, 376' x 37', single screw, 14 knots. Four masts and one funnel. Charters by Pacific Mail Steamship Co. from Elder, and used in the San Francisco-Sydney service 1876-1885. Purchased from John Elder by Oceanic Steamship Co. in 1886. In their San Francisco-Honolulu service, 1886-1901; San Francisco-Tahiti run, 1901-02. Seized by the Japanese Government at Yokohama on Aug. 26, 1905. Sister ship: Zealandia.



August 7, 1896. Card datelined at Makaweli Plant and put into the mails at an undetermined post office on the Island of Kauai (partial purple circular date stamp strike.)

August 10, 8 AM. Card was transit at Honolulu where it went aboard the Australia which made the "milk run" Honolulu to San Francisco.

August 22. The Examiner, San Francisco: Steamer due to arrive at San Francisco, Australia from Honolulu Aug. 22.

Arrival date is corroborated by the SAN FRANCISCO, BOX receiving stamp, a special postmark for box mail.

August 29. Sailed from S.F. steamer Australia, Houdlette, a one week turnaround.



1898

TRANSPACIFIC MAIL  
OCEANIC STEAMSHIP CO.

S. S. Mariposa

N.Z  
PUPIRI  
14 JA 98  
1

N.Z  
THAMES  
14 JA 98  
4

AUCKLAND  
3  
15 JA 98  
N.Z



Jan. 14, 1898. Letter posted at the small town of Pupiri, New Zealand on the North Island, where the 2½d. U.P.U. rate was paid by the Issue of 1891. Transit backstamp same day at Thames, N.Z.

Jan. 15. Transit backstamp at Auckland where the Oceanic Co.'s steamships called outbound from Melbourne to San Francisco.

SAN FRANCISCO CAL  
FEB 10  
1898  
PAID ALL

SAN FRANCISCO  
CALA  
FEB 10 2-PM '98



DEFICIENCY IN  
ADDRESS  
SUPPLIED BY  
San Francisco  
P. O.

London Times, Friday, Feb. 11. The Oceanic Company's s. MARIPOSA, from Sydney, N.S.W. arrived at San Francisco at 2 a.m. yesterday.

San Francisco transit backstamps. The San Francisco added the "Mass." to the address and noted this action by the seldom seen DEFICIENCY IN ADDRESS purple handstamp.

NW BEDFORD  
MASS.  
FEB 15  
6 PM  
1898

Feb. 15. New Bedford arrival backstamp. Addressed to "Soda Water Street, New Bedford."

1898



ORIGINATING P.O. DUPLICATION

S.F. TRANSIT  
BACKSTAMP

ARRIVAL  
BACKSTAMP



THE SAN FRANCISCO EXAMINER OF 4 MAY 1898 REPORTED:

"THE OCEANIC STEAMSHIP COMPANY'S 'S.S. MARIPOSA', HAYWARDS, CAPTAIN-DEPARTED SYDNEY 11 APRIL 1898 VIA HONOLULU FOR SAN FRANCISCO. ARRIVED 3 MAY 1898 - 23 DAYS FROM SYDNEY VIA HONOLULU 5 DAYS 22 HOURS"

1898

TRANSPACIFIC MAIL  
OCEANIC STEAMSHIP CO. S.S. Alameda



August 22, 1898. A registered letter posted at Ultimo, New South Wales. It was paid 2½d. U.P.U. rate plus 2d. Registry Fee, total 5½d., made up of the 2d. printed envelope, Issue of 1897, the 3d. green, perf. 11, Issue of 1882, and the ½d. slate, perf 11 x 12, Issue of 1892. Letter is cancelled by the P.O. number 1034 of Ultimo.



August 22. Transit backstamp at Sydney, from which port the Oceanic Steamship Co.'s vessels departed for San Francisco.



London Times, THURSDAY, Sept. 22 1898. The Oceanic Company's s. ALAMEDA, from Sydney, arrived at San Francisco at 8 a.m. yesterday.

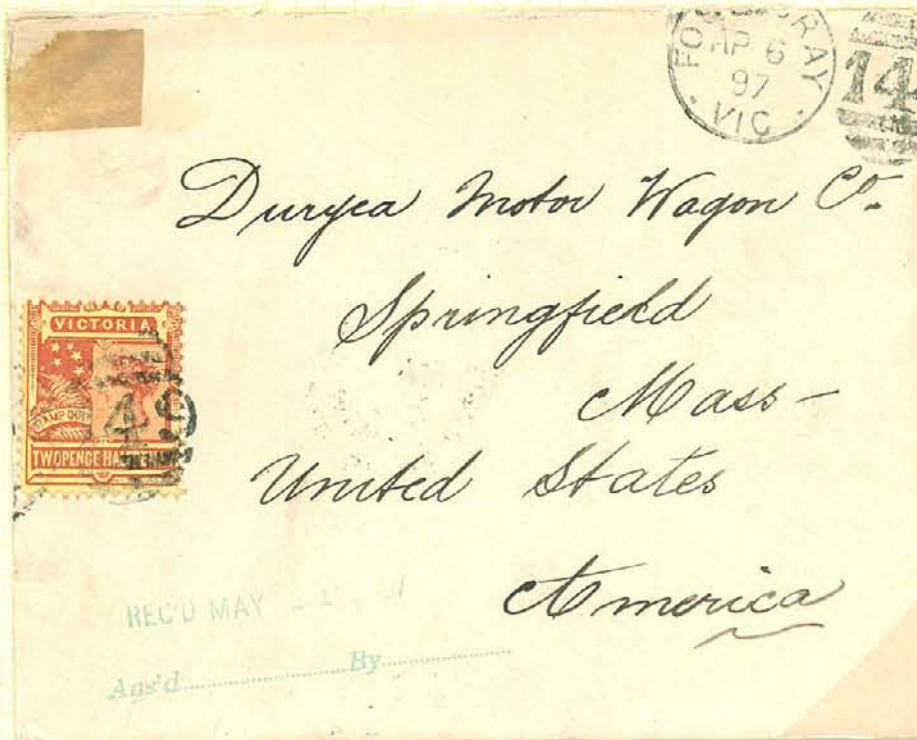
September 21. Registry backstamp at San Francisco.



September 27. Registry backstamp at Boston.

1897

TRANSPACIFIC MAIL  
OCEANIC STEAMSHIP CO. S.S. Alameda  
a.k.a. Spreckles Line  
Sydney to San Francisco via Honolulu



April 6, 1897. The U.P.U. rate of 2½d. paid at Footscray, Victoria by the Issue of 1890. Stamp cancelled by the duplex obliterator with "149" Post Office number of Footscray, a borough of Bourke Co., on Saltwater River, 4 miles by rail S.W. of Melbourne, population 2473.

Note interesting address: Duryea Motor Wagon Co., an early automobile manufacturer.

April 12. Steamship Alameda picked up the Hawaiian and U.S. mails at Sydney.

San Francisco Examiner: Arrived May 6, Stmr. Alameda, Van Oterndorp, 24 days 13 hrs. from Sydney via Honolulu 6 days 14 hrs. to J.D. Spreckles & Bros. Co.

Mail was forwarded east by rail.

May 11. Arrival backstamp at Springfield, Massachusetts.





1899

TRANSPACIFIC MAIL

OCEANIC STEAMSHIP CO.

S.S. Mariposa (1883)

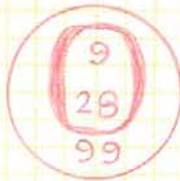
Sydney to San Francisco via Honolulu

The Oceanic Steamship Company, also known as the Spreckles Line, was established in 1878. Service was provided between San Francisco and Sydney, Australia via Honolulu. The Matson Navigation Company acquired control of the line in 1926, however, continuing to operate the company as a subsidiary under the original name.



August 29, 1899. Registered letter at Sydney, New South Wales, paid at a quadruple U.P.U. rate of 2½d. per ½-oz. x 4 = 10d. in stamps plus 3d. registry fee paid by the stamped envelope. The S.S. Mariposa called at Sydney Aug. 29 en route to San Francisco.

SAN FRANCISCO, CAL  
SEP 22 1899  
REGISTRY DIVISION.



Sept. 28, 1899. New York Registry Division arrival backstamp.

N.Y. Times notice:  
TRANSPACIFIC MAIL  
POST OFFICE NOTICE

Sept. 22. Transit backstamp at San Francisco upon arrival of the S.S. Mariposa.

Postmaster Van Cott announces that mails from Australia, New Zealand and Hawaii of the following dates: Melbourne, Aug. 29; Sydney, Aug. 30; Auckland, Sept. 4 and Honolulu, Sept. 15, which arrived at San Francisco per steamer Mariposa, are to arrive in New York the morning of Thursday, Sept. 28.

1890

TRANSPACIFIC MAIL

OCEANIC STEAMSHIP CO.

S.S. Mariposa

U.S. to New Zealand

12¢ Treaty Rate via S. Francisco

Effective Dec. 1870 to Oct. 1891

July 14, 1890.  
Letter paid at  
Troy, N.Y. at  
the 12¢ Treaty  
rate via San  
Francisco by a  
10¢ American  
Bank Note Co.  
(re-engraved),  
Issue of April  
1882 and 2¢  
green, Issue  
of 1887.

P.O. NOTICE,  
N.Y. Times:  
CLOSING OF  
FOREIGN MAILS.

Mails for  
Australia, New  
Zealand, Fiji,  
Hawaiian and  
Samoan Islands

per steamship Maraposa (from San Francisco) close  
here July 20 at 6:30 PM (or on arrival at New-York  
of steamship Aurania with British mails for Austr-  
alia.)



July 22. Arrival backstamp  
at San Francisco. The Daily Alta  
California carried the following advertisement:

OCEANIC STEAMSHIP COMPANY  
CARRYING UNITED STATES, HAWAIIAN AND  
Colonial Mails. Will leave the Company's Wharf -  
Oceanic Steamship Co. Wharf.

For Honolulu, Auckland and Sydney  
Without Change

The Splendid New 3000 ton Iron Steamer  
MARIPOSA

SATURDAY.....July 26, 1890 at 12M.

John D. Spreckles & Bros., General Agents.

July 26. Cleared, stmr. Mariposa, Hayward, Honolulu, Sydney  
J.D. Spreckles & Bros.



August 16. Arrival backstamp at  
Auckland.



1895-96

TRANSPACIFIC MAIL  
OCEANIC STEAMSHIP CO.

S. S. Mariposa

N-Z  
ROTORUA  
14 DE 95  
2

N. Z.  
AUCKLAND  
16 DE 95  
13



December 14, 1895. Letter paid at Rotorua, New Zealand at the 2½d. U.P.U. rate, made up by the half penny black, Issue of 1895, perf. 10 and 2d., Issue of 1882, perf. 10.

December 16. Transit backstamp at Auckland.

December 24. S.S. Mariposa of the Oceanic Steamship Co. departed from Sydney, picked up the New Zealand mail outbound to San Francisco.

SAN FRANCISCO CAL.  
JAN 16  
1896  
PAID ALL

San Francisco Examiner, Jan. 17, 1896. Arrived Jan. 16, stmr. Mariposa, Hayward, 24 days from Sydney via Honolulu 6½ days; passengers and mdse. to J.D. Spreckles Bros. & Co.

PHILA. PA. REC'D  
JAN 21  
130 PM  
96  
STA. C

PHILADELPHIA  
JAN 21  
5-30 P.  
1896

— C —  
RECEIVED

Jan. 21. Philadelphia Station C arrival backstamps. Usual 5 day transcontinental transit by rail.

1896

TRANSPACIFIC MAIL

OCEANIC STEAMSHIP CO.

S.S. Alameda

a/k/a Spreckles Line



August 8, 1896. Letter to Buffalo, N.Y. from Auckland, New Zealand, paid at the 2½d. U.P.U. rate made up by the 2d. Issue of 1882, perf. 10 and half penny, Issue of 1895, perf. 10.

August 3. S.S. Alameda of the Oceanic Steamship Co. departed from Sydney, picked up New Zealand mail at Auckland on August 8.



San Francisco Examiner, Aug. 28. Arrived Aug. 27, steamer Alameda, Van Orterendorp, 24 days 9 hours from Sydney via Honolulu 6 days 14 hours to J.D. Spreckles Bros. & Co.



Sept. 1. Buffalo, N.Y. receiving backstamps.

1898

TRANSPACIFIC MAIL  
OCEANIC STEAMSHIP CO.

S.S. Mariposa



October 12, 1898. Hawaii Issue of 1894 pays the 2¢ Soldier's rate to the U.S. Letter is noted "Soldiers Letter" at left. The S.S. Mariposa of the Oceanic Steamship Co. stopped at Honolulu this same day en route from Australia. This letter went aboard her at Honolulu with the U.S. and points beyond mails.

SAN FRANCISCO  
- CALA. -  
OCT 19 11- AM '98



The Examiner, San Francisco, October 20. ARRIVED OCT. 19:  
Stmr. Mariposa, Hayward, 24 days from Sydney, via Honolulu,  
7 days.

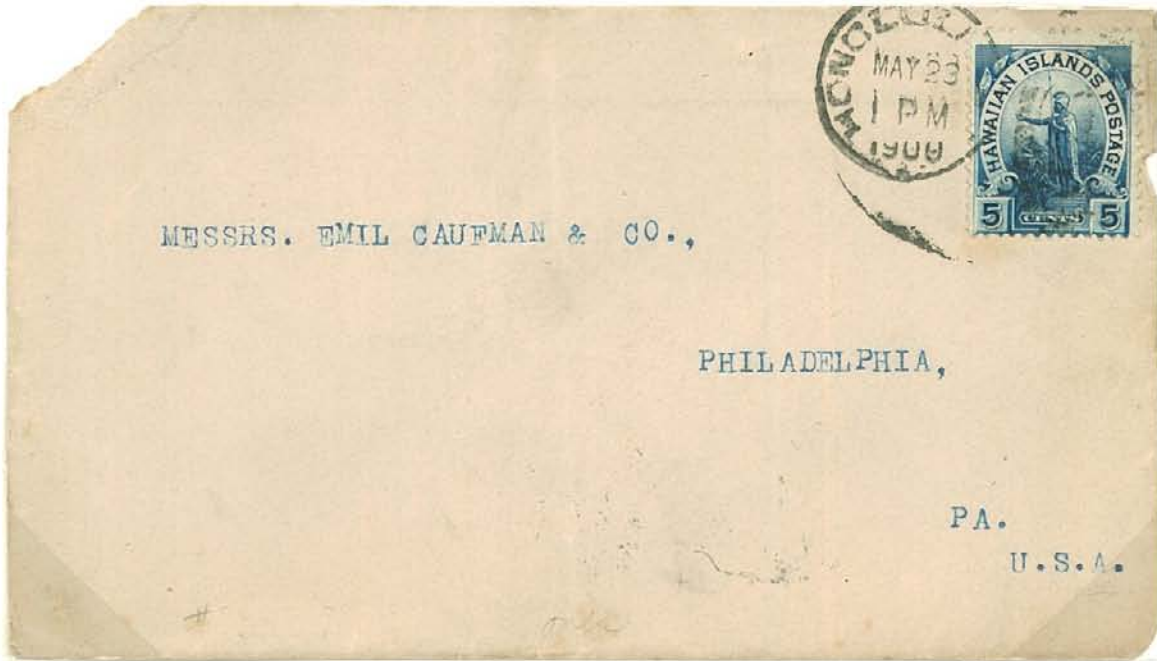


October 25. Andes, N.Y. arrival backstamp. Usual 5-6 day transcontinental transit time by rail.

1900

TRANSPACIFIC MAIL

OCEANIC STEAMSHIP CO. S.S. Mariposa  
Sydney to San Francisco via Honolulu



MESSRS. EMIL CAUFMAN & CO.,

PHILADELPHIA,

PA.

U.S.A.



May 23, 1900. Letter backstamped at Honolulu by the Wells Fargo & Co., Ltd. The U.P.U. rate of 5¢ was paid by the Hawaiian Issue of 1899, cancelled the same day by the Honolulu Station No. 1 duplex.

May 24. S.S. Mariposa of the Ocean Steamship Co. touched at Honolulu on her way from Sydney to San Francisco.

San Francisco Examiner. Arrived June 1, 1900. Stmr. Mariposa, Houdlette, 23 days 1 hour from Sydney, via Honolulu 6 days 6 hours 10 minutes.



June 4. Philadelphia arrival backstamp, a fast transcontinental trip of 4 days.

1900

TRANSPACIFIC MAIL

OCEANIC STEAMSHIP CO.

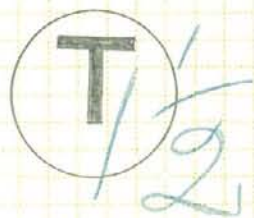
S.S. Mariposa

Sydney and San Francisco via Honolulu

3,158 tons, dimensions: 314' x 41', single screw, 15 knots, reciprocating engines. Built by W. Cramp & Sons, Philadelphia, two masts, one funnel, steel hull. Launched March 7, 1883. In San Francisco-Honolulu service 1883-85. San Francisco-Tahiti trade during 1901-12, sold to Alaska Steamship Company in 1912. Lost on Straits Island Reef, Sumner Straits, Alaska in 1917.



July 19, 1900. Letter partly paid at Suva, Fiji by 2½d. Issue of 1891 stamp. Local steamer took the mail to Auckland, New Zealand to meet the Oceanic Steamship Co.'s steamship for San Francisco via Honolulu. Mariposa picked up mail at Auckland August 6 and arrived at San Francisco Aug. 24, backstamp at 'Frisco.



U.S. CHARGE TO COLLECT 6 CENTS



British marked letter due (Tax) at underpaid 1½d., equivalent to 3¢ U.S. San Francisco converted this to a double underpaid penalty or 6¢ due.

Aug. 29. N.Y. Times. Aug. 28, 1900:

TRANSPACIFIC MAIL  
POST OFFICE NOTICE



Postmaster Van Cott announces that the mail from Australia, New Zealand and Hawaii of the following dates: Melbourne, July 31; Sydney, Aug. 1; Auckland, Aug. 6, and Honolulu Aug. 17, reached San Francisco per steamer Mariposa. Due in N.Y. on the morning of Aug. 29, except mail from Sydney, which is due on the afternoon of the 29th.

Boston mail was bagged directly there where bulk was broken and the Foreign Division backstamped. For'd to P'land, arrival Aug. 30.

1900

12.30  
DE-18  
00  
QUEENSLAND

BRISBANE  
A  
DE-19  
00  
QUEENSLAND

SAN FRANCISCO

JAN 12 3-PM

OAKLAND  
JAN 12  
4-PM  
19 01  
CAL.

RECEIVED  
1

UNKNOWN  
ORIGINATING  
POST OFFICE

TRANSIT BACK STAMPS



OAKLAND, CAL.  
JAN  
18  
1 PM  
1901  
REC'D

ARRIVAL  
BACKSTAMP

THE SAN FRANCISCO EXAMINER OF SUNDAY 13 JANUARY 1901 REPORTED:  
"SS MARIPOSA, RENNIE, CAPT. 21 DAYS 11 HRS 6 MINS.  
FROM SYDNEY VIA HONOLULU 5 DAYS 17 HRS 15 MINS."



1902

TRANSPACIFIC MAIL

OCEANIC STEAMSHIP CO.

S.S. Sierra

KURRAJONG, NEW SOUTH WALES TO NEWFOUNDLAND VIA 'FRISCO



January 6, 1902. A registered letter posted at Kurrajong, New South Wales with U.P.U. postage of 2½d. plus 5d. registry fee, total 7½d., paid by the SEVEN PENCE/HALFPENNY surcharge of 1891 on 6d. brown, perf. 11 x 11½. Same day transit marks at Richmond and Sydney, backstamps.

January 7. S.S. Sierra of the Oceanic Steamship Co. departed from Sydney, New South Wales.

N.Y. Times, Wednesday, January 29, 1902. TRANSPACIFIC MAILS/POST OFFICE NOTICE. Postmaster Van Cott announces that the Mails from Australia, China, Japan, Hawaii, and New Zealand of the following dates: Hong Kong, Dec. 31; Shanghai, Jan. 4, Yokohama, Jan. 10; Melbourne, Jan. 6; Sydney, Jan. 7; Auckland, Jan. 11, and Honolulu, Jan. 20, which arrived at San Francisco per steamers China and Sierra, were dispatched East Jan. 27 at 6 P.M. and are due in New York on the morning of Saturday, Feb. 1.

January 27. S.S. Sierra arrived at San Francisco, mails forwarded east by rail.



Feb. 1-8. Transit backstamps, San Francisco-Windsor, Ontario-St. John's Newfoundland, final arrival at Bonavista Bay, Newfoundland. Many Way-bill numbers appear on this registered left, final one "121" at lower left at Bonavista Bay.

1902

TRANSPACIFIC MAIL

OCEANIC STEAMSHIP Co.

S.S. Sierra

Sydney to San Francisco via Honolulu

Samoa - German Dominion



May 19, 1902. Letter posted at the 20 pf. U.P.U. rate at Apia, the capital of Samoa under German Dominion from 1900 to 1915. Mail sent on to Honolulu by feeder steamer.

May 29. S.S. Sierra called at Honolulu en route to San Francisco from Sydney. She left the latter port May 14.

Duplex Machine backstamps:

June 2. San Francisco Examiner: Arrived Stmr. Sierra, Houdlette, 20 days from Sydney via Honolulu, 5 days 9 hrs 30 min.

June 6. Arrival backstamp at Chicago.

1902

TRANSPACIFIC MAIL

OCEANIC STEAMSHIP CO.

S.S. Sierra

Sydney to San Francisco via Honolulu



May 8, 1902. Although written on a beautifully backflap embossed P.&O. envelope, this letter went via Oceanic Steamship Co. to San Francisco. Letter posted at Laros Bay, South Australia with the 2½d. U.P.U. rate paid by the Issue of 1899, dark blue, perf. 13.

May 13. S.S. Sierra of the Oceanic S.S. Co. departed from Sydney with the Australian mails.

San Francisco Examiner, June 3. Arrived June 2, 1902, Stmr. Sierra, Houdlette, 20 days from Sydney, via Honolulu 5 days 9 hours 30 minutes.

June 7. Arrival backstamp at Mansfield, Mass.



1903

TRANSPACIFIC MAIL

OCEANIC STEAMSHIP CO.

S.S. Sierra

Sydney to San Francisco via Honolulu Registered

6135 tons, built by W. Cramp & Sons, Philadelphia, 400' x 50', twin-screw, 17 knots. Reciprocating engines, two masts, one funnel (originally two funnels). In service San Francisco-Sydney 1901-07; S.F. - Honolulu, 1910-15; San Francisco-Sydney 1915-17. 1919 sold to Green Star Steamship Co., renamed Gdansk. Sold to Japanese shipbreakers in 1934.



May 25, 1903. Double weight ( $\frac{1}{2}$ -oz. x 2) paid at 2 $\frac{1}{2}$ d. per  $\frac{1}{2}$ -oz. plus registration fee of 3d., Issues of 1900. Letter endorsed "Via 'Frisco". Transit registration backstamp at Dunedin on the South Island for transit by steamer to Auckland which is on the North Island. S.S. Sierra called at Auckland May 29.

June 15. San Francisco transit backstamp.

June 20. New York arrival backstamp. New York Times, Friday June 19, 1903:

TRANSPACIFIC MAIL  
POST OFFICE NOTICE

Postmaster Van Cott announces that mails from Australia, New Zealand and Hawaii of the following dates: Melbourne, May 23; Sydney, May 25; Auckland, May 29, and Honolulu, June 9 reached San Francisco per steamer Sierra and were dispatched East at 10 A.M. and 6 P.M. June 15. A portion of this mail is due in New York this morning and the remaining tomorrow morning, June 20.



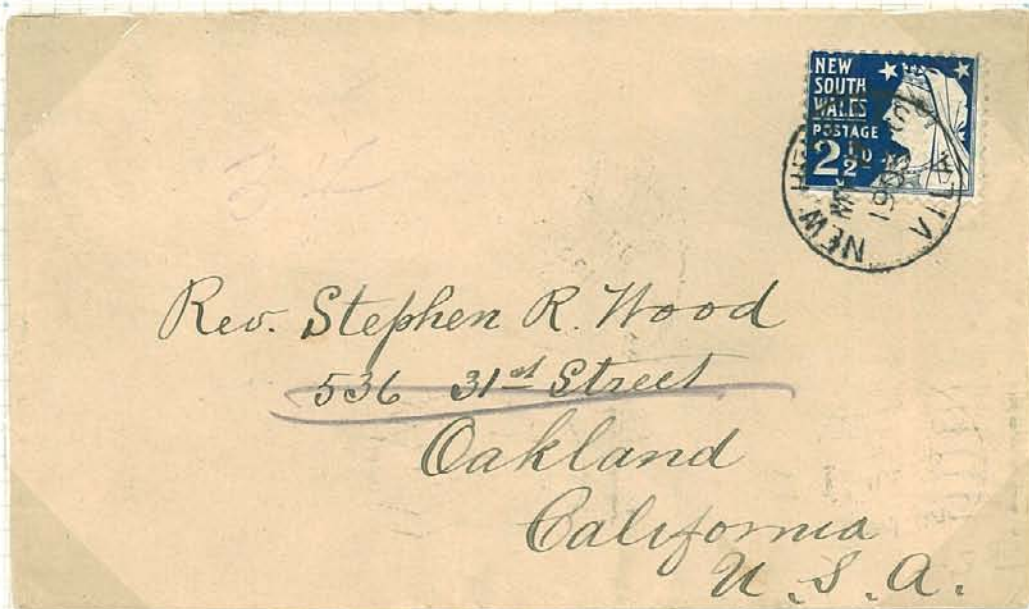


1903



ORIGINATING P.O.

TRANSIT BACKSTAMPS



ARRIVAL BACKSTAMP

THE SAN FRANCISCO EXAMINER OF 7 JULY 1903 REPORTED:  
"ARRIVED THIS PORT, 6 JULY, STEAMER 'SONOMA', HARRINGTON.  
20 DAYS 19 HRS 6 MIN FROM SYDNEY, VIA HONOLULU 5 DAYS  
20 HRS 10 MINS."

1903

TRANSPACIFIC MAIL  
OCEANIC STEAMSHIP CO. S.S. Sonoma

The Oceanic Steamship Company, also known as the Spreckles Line, was established in 1878. Service was provided between San Francisco and Sydney, Australia, via Honolulu. The Matson Navigation Company acquired control of the line in 1926. However, the Matson Line continued to operate the company, as a subsidiary, under the original name.



Messrs. G. A. Crosby & Co.  
S A R N I A, O N T.,  
C A N A D A.



August 14, 1903. A letter not over ½-oz. paid at the 2½d. U.P.U. rate by South Australia Issue of 1899, dark blue at Adelaide, S.A.

August 17. Letter went by local steamer to Sydney, backstamp, from which port the S.S. Sonoma of the Oceanic Line departed on August 17.



N.Y. Times, Thursday September 10. Postmaster Van Cott announces that mails from Australia, New Zealand and Hawaii for the following dates: Melbourne, Aug. 15; Sydney, Aug. 17, Auckland, Aug. 21 and Honolulu, Sept. 1, reached San Francisco per steamer Sonoma, were dispatched East at 6PM Sept. 8. Sept. 14. Sarnia, Ontario arrival backstamp.

1904

TRANSPACIFIC MAIL  
SYDNEY TO U.S. VIA AUCKLAND AND HONOLULU  
S.S. Ventura OCEANIC STEAMSHIP CO.



May 2, 1904. A registered letter paid at the Money Order window at Williamstown, a town near Adelaide, Victoria, Australia. An array of Victoria stamps pay the 2½d. U.P.U. rate plus 5½d. registry fee.

May 3. Transit backstamp at Melbourne, Victoria.

May 15. S.S. Ventura departed from Sydney, New South Wales for San Francisco.

San Francisco Examiner. Arrived June 6, Stmr. Ventura, Hayward, 21 days and 18 hours from Sydney via Auckland 17 days and 17 hours via Honolulu 5 days and 19 hours.

June 7. San Francisco registered backstamp.

June 12. Philadelphia registry backstamp. The usual five day coast-to-coast transit time by rail is shown here.



1906

TRANSPACIFIC MAIL

OCEANIC STEAMSHIP CO. a.k.a. Spreckles Line

S.S. Sonoma

Sydney to San Francisco via Honolulu

Built 1901 by Cramp & Sons Co., Philadelphia. 6279 tons, 400" x 50", twin-screw, 17 knots. In service San Francisco - Sydney, 1901-07, 1912-17, 1920-32. Sold to Japanese shipbreakers in 1934.



August 18, 1906. One penny post card noted, "Available only for the Commonwealth, the United Kingdom, British New Guinea, New Zealand and Fiji; if used for any other place, a Half-Penny Stamp must be affixed." Rate for the U.S. was made up by adding the half-penny Issue of 1899. Card posted at Portpirie, South Australia.

September 6. Card was forwarded overland to Sydney where it was held for the sailing of the Ocean Steamship Co.'s S.S. Sonoma, which departed from that port Sept. 6.



October 2. San Francisco Examiner, Oct. 2, 1906. Arr. S.F. Oct. 1, Stmr. Sonoma, Trask, 25 days from Sydney, via Honolulu 7 days. Pass. and mdse to J.D. Spreckles & Bros. Co.

1903

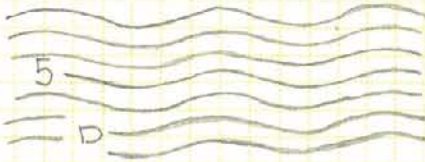
TRANSPACIFIC MAIL

OCEANIC STEAMSHIP CO.

S.S. Ventura

New Zealand to U.S. via San Francisco

Built 1900 by W. Cramp & Sons Co., Philadelphia. 6282 tons, 400' x 50', twin screw, 17 knots. Triple expansion engines. Two masts, one funnel. Completed in Dec. 1900. In San Francisco - Sydney service 1901-07, 1912-17, 1920-32. Sold to Japanese shipbreakers in 1934. Sister ships: Sierra and Sonoma.



Nov. 6, 1903. Letter posted at Denniston, New Zealand, paid at the 2½d. rate by stamp, Issue of 1899. Transit backstamp at Westport the same day.

Nov. 10. Transit backstamp at Wellington, N.Z. The S.S. Ventura picked up letter at her call at Auckland Nov. 13.

Dec. 5. Mails arrived in N.Y. the morning of Dec. 5 and backstamps show rapid transit; 4:30 PM transit through Boston and 11:30 PM arrival at Portland Maine, all on the 5th.

N.Y. Times : TRANSPACIFIC MAILS

Postmaster Van Cott announces that mails from Australia, New Zealand and Hawaii of the following dates: Melbourne, Nov. 7; Sydney, Nov. 9; Auckland, Nov. 13 and Honolulu, Nov. 24, reached S. Francisco per steamer Ventura and were dispatched east at 6 PM Nov. 30. Due in New York on the morning of Saturday, Dec. 5.

1900

TRANSPACIFIC MAIL

OCEANIC STEAMSHIP CO.

S.S. Alameda

Sydney to San Francisco via Honolulu



Sept. 24, 1900.  
Letter to Boston "Via  
S. Francisco" paid 2½d.  
(overpaid ½d.) at the  
U.P.U. rate by a strip  
of three of the One  
Penny, Issue of 1897-  
1900. Inglewood is  
on the Queensland  
border with New South  
Wales.

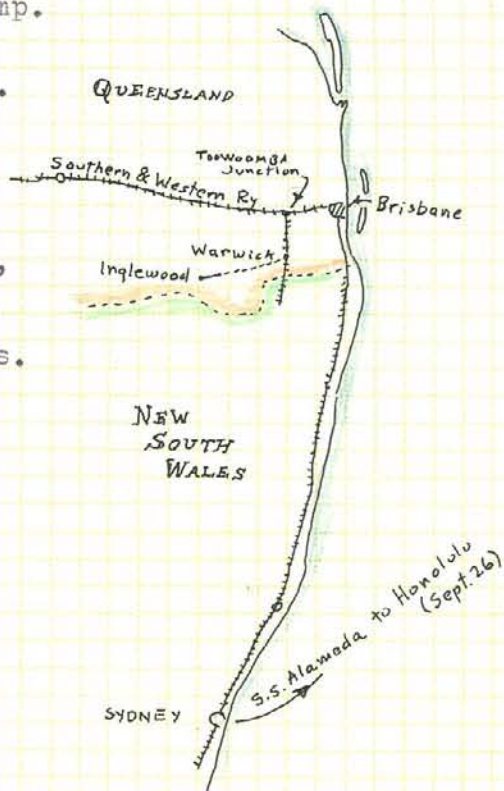


Sept. 25. Travelling Post Office of the  
Southern & Western Railway. Letter went on the  
UP train, Warwick to Brisbane, then down the coastal  
railway to Sydney. Backstamp.

Sept. 26. S.S. Alameda  
of the Oceanic Steamship Co.  
departed from Sydney to San  
Francisco via Honolulu.

Oct. 19. Transit back-  
stamp. San Francisco Exam-  
iner: Arrived Oct. 19, 1900,  
steamer Alameda, Van Oter-  
endorp, 24 days from Sydney  
via Honolulu 6 days 14 hours.

Oct. 24. Boston arrival  
backstamp, five days coast-  
to-coast. Letter delivered  
to the Tremont Temple,  
Boston.



1904

TRANSPACIFIC MAIL

OCEANIC STEAMSHIP COMPANY

S.S. Alameda

3158 tons, 314' x 41', built 1883 by W. Cramp & Sons, Chester, Penn. Single screw, triple expansion engines, 15 knots. Two masts, one funnel. Later lengthened to 327 ft. (3709 tons). In San Francisco - Sydney Service, 1885-1901; San Francisco - Honolulu, 1901-10. Sold to Alaska Steamship Co. in March 1910. Sister ship: Mariposa.



September 19, 1904. Letter paid by stamps, ha'penny, Issue of 1885 (perf. 14) and 2d., Issue of 1902 at 2½d. U.P.U. rate. Cancelled at the Ship Mail Room (S.M.R.) at Perth. Ships of the Canadian Australian Royal Mail Line (a subsidiary of the Union Steamship Co.) carried U.S. bound mail to Honolulu, then went on to Vancouver.

Oct. 19. Steamer Alameda, Capt. Dowdell, left Honolulu with this letter aboard.

San Francisco Examiner: Arrived Oct. 25, 1904, steamer Alameda, Dowdell, 6 days from Honolulu.



Oct. 29. Normal transit time by rail transcontinental was 4-5 days. Three arrival backstamps at Lynn: 9:30 AM at Station 2; 11:30 am at West Lynn, and 3 PM at the main P.O., Lynn.



1902

TRANSPACIFIC MAIL  
OCEANIC STEAMSHIP CO.

S. S. Ventura



January 8, 1902. A letter to New Zealand paid at the 5¢ U.P.U. rate by the Columbian Issue envelope, Issue of 1893. Transit backstamp of the New York Foreign Branch, January 9.

N.Y. Times. TRANSPACIFIC MAILS. Mails for Australia (except West Australia, which are forwarded via Europe) New Zealand, Fiji, Samoa and Hawaii, via San Francisco, close here daily at 6 P.M., after Jan. 5 and up to Jan. 11 inclusive or on arrival of steamer Eturia, due at New York Jan. 11, for dispatch per steamer Ventura.

January 11. S.S. Eturia of the Cunard Line arrived at N.Y. from Liverpool Jan. 4 and Queenstown the 5th. She arrived at the Bar at 5:36 P.M., so the transpacific mails went out on time.

February 6. Arrival at Dunedin, New Zealand. Arrival backstamp aboard the Railway Post Office.



1921

TRANSPACIFIC MAIL

SYDNEY TO U.S. VIA PAGO PAGO AND HONOLULU

S. S. Ventura

OCEANIC STEAMSHIP CO.

a/k/a Spreckles Line



Jan. 25, 1921. Letter datelined at "Bonnington" Woolwich, Via Sydney, N.S.W., Australia and is endorsed: Via SS Ventura. The letter says, *inter alia*, "The Ventura came to Sydney on the 21st and sails 26th for Frisco. I expected the information, that Mr. Norton says, he wanted from the Bank of Australia, Sydney would have been to hand by the 'Ventura'...American commodities are not very welcome in Australia at the present time, owing, somewhat to the low rate of Exchange?"

Jan. 26. S.S. Ventura departed from Sydney.

San Francisco Examiner, Wed., Feb. 16. Arr. Feb. 15, Steamer Venrura, Dawson, 19 days 11 hours 54 minutes from Sydney via Pago Pago, 13 days 18 hours 36 minutes, via Honolulu 5 days 14 hours 23 minutes at 2:15 p.m.. Pass. and mdse to J.P. Spreckles & Bros. Co.

1927

TRANSPACIFIC MAIL

OCEANIC STEAMSHIP CO.

S.S. Sierra

The 6135 ton Sierra was built in 1900 by W. Cramp & Sons Co., Philadelphia. She was in service San Francisco - Sydney, 1901-07; San Francisco - Honolulu, 1910-15; San Francisco - Sydney, 1915-17. Sold to Green Star Steamship Co. in 1919. Re-named Gdansk. Re-purchased in 1923 and re-named Sierra. In service San Francisco - Sydney, 1924-32, as when she carried the letter below. Sold to Japanese shipbreakers in 1934.



July 14, 1927. A registered letter posted at Hobart, Tasmania. It is paid by the Australia one shilling Issue of 1916. The Commonwealth of Australia rate for foreign letters was 3d. per oz., 1st Class and 3d. registration. This letter went as triple rated at 3d. x 3 = 9d. + 3d. registration = 12d. or one shilling.

July 16. Melbourne registry backstamp.

July 23. S.S. Sierra departed from Sydney.

San Francisco Examiner. Arrived at this port Aug. 11. Stmr. SIERRA, Trask, 19 ds. 16 hours 6 min. from Sydney via Honolulu 5 ds. 14 hours 2 min. at 10:45 a.m. Pass. and mdse to Oceanic Steamship Company. Docked at pier 32.

August 11. San Francisco transit backstamp.

August 16. Mansfield, Mass. arrival backstamp.

U. S. A.

Rev. T. C. Klinker

125. N. Gray Street

Gibbsburg

Pa

YOKOHAMA  
R No. C 510

REGISTERED





149

Price

To

Large  
Devizos

San Park  
New York, NY 10005 USA  
50-2543

