

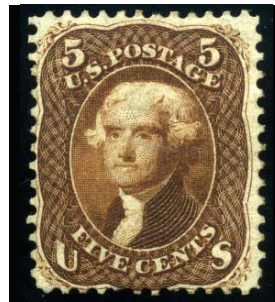
SIEGEL AUCTION GALLERIES

CENSUS OF 5-CENT BROWN, FIRST DESIGN (SCOTT 57)

SPECIAL NOTE: There are many United States stamps that look similar to the rarities listed below. Some of the differences between expensive rarities and common stamps can be subtle, including differences in perforation, shade and size. These stamps should have certificates from a recognized expertizing committee, such as The Philatelic Foundation or P.S.E. If you think you have one of these rarities, we cannot help you until after it has such a certificate.



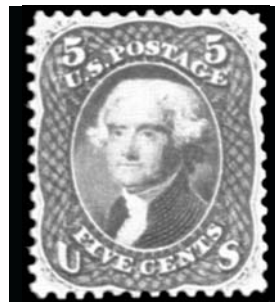
57-UNC-01
 Ambassador Col. - RAS 4/27/1966, Lot 78 "pinpoint margin thin specks T.R.& B.R."
 RAS 6/22/1967
 RAS 11/25/1969, Lot 337 "repaired and other slight defects"
 McNall - Superior 10/26/1992 "tiny tear, sm. thins"
 PFC 638 "Genuine but repaired and regummed"
 PFC 47668 "Genuine with tiny tear and small thin spots"



57-OG-02
 Lilly - RAS 2/2/1967, Lot 126 "two blunt perfs"
 Newport Coll., PRW, 5/2008
 PFC 41465 "Genuine"
 PFC 460720 "Genuine, traces of gum, added perf at left fourth down from the top"



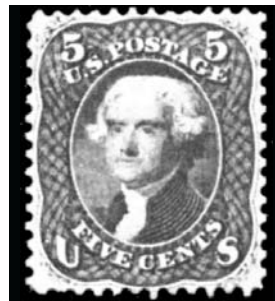
57-OG-03
 RAS 3/25/1969
 Isabelle Lessmann Coll. - RAS 9/12/1984, Lot 87 (insignificant perf crease)
 PFC 34368 "Genuine Part O.G."



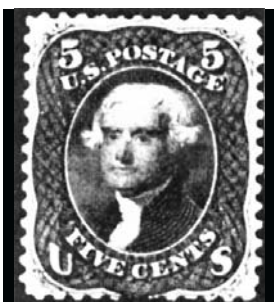
57-UNC-04
 Hale Coll. - Sanabria 5/8/1939
 PFC 99736 "Genuine, no gum"



57-OG-05
 Waterhouse Coll. - RAS 3/24/1970
 "single nibbed perf" (at L.L.)
 PFC 5906 "Genuine"



57-UNC-06
 Green Coll. - HR 5/26/1943
 Cole Coll. - RAS 2/24/1988
 Concord Coll. - RAS 5/9/1994, Lot 80 - \$17,500
 PFC 6317 "Genuine"
 PFC 190490 "Genuine"



57-OG-07
 RAS 2/27/1964 "short perfs"
 Wm. Fox 5/15/1979 "short perf... corner perf crease"
 PFC 983 "Genuine"
 PFC 5005 "Genuine"



57-OG-08
 Neinken Coll. - RAS 11/20/1970
 PFC 787 "Genuine but repaired"
 PFC 213809 "Genuine, Part O.G., repaired at bottom"



57-OG-09
 RAS 6/18/1964 with s.e. at R.
 RAS 2/24/1965 reperfed at R.
 Mielstrup Coll. - RAS 5/2/1973, Lot 122 reperfed at R.
 SPG 10/18/2002, Lot 77 (not describing reperfeeding) - \$11,500
 Dr. Claiborne Johnson Jr. Coll. - SPG 10/17/2003, lot 45 (described as reperfed) - \$6,000
 PFC 19601 "Genuine O.G."
 PFC 214346 "Genuine, PH, small creases"
before reperfeeding



57-CAN-10
 Wolfers 4/28/1978 "faint horiz crease & trivial thin in UR perfs"
 PFC 3039 "Genuine"

SIEGEL AUCTION GALLERIES

CENSUS OF 5-CENT BROWN, FIRST DESIGN (SCOTT 57)

SPECIAL NOTE: There are many United States stamps that look similar to the rarities listed below. Some of the differences between expensive rarities and common stamps can be subtle, including differences in perforation, shade and size. These stamps should have certificates from a recognized expertizing committee, such as The Philatelic Foundation or P.S.E. If you think you have one of these rarities, we cannot help you until after it has such a certificate.



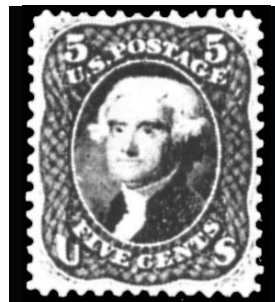
57-UNC-11
RAS 3/28/1977 (no faults)
PFC 257252 "tiny closed tear at B.L."



57-UNC-12
HRH 10/30/1944 "thin at T. & clipped at B."



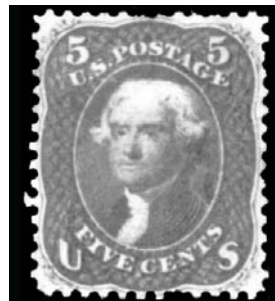
57-OG-13
HRH 5/5/1971 "part O.G." (short perfs at T.)
Ex Carey and Chanin
Sheriff Coll. - RAS 12/11/1985
Weisman Coll. - SPG 5/8/1998, Lot 1038 - \$6,500
Chapin Coll. - SPG 5/30/2003, Lot 120 - \$8,000



57-OG-14
Gleysteen Coll. - Mozian 2/23/1972
Hewitt Coll. - Ivy 5/26/1986, Lot 157
Floyd Coll. - SPG 10/23/2001, Lot 121 - \$35,000
PFC 36508 "Gen. Part O.G."
PFC 278606 "Genuine, PH with Part O.G."



57-UNC-15
RAS 3/27/1974
PFC 10972 "Genuine"



57-UNC-16
RAS 3/23/1972 "small thin at top and a few short perfs"
PFC 36250 "Genuine, slightly defective at top"



57-UNC-17
RAS 4/11/1978 "two very lightly toned perfs at left"
PFC 40445 "Genuine traces of stain at left and no gum"



57-UNC-18
RAS 10/27/1965
PFC 2221 "privately perf proof"
PFC 13351 "Genuine, no gum, nibbed perfs at bottom"



57-UNC-19
Isleham Coll. - RAS 5/1986
PFC 163931 "Genuine"

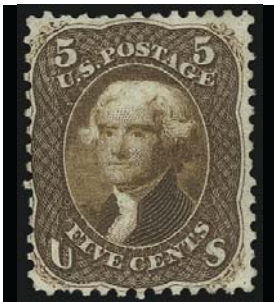


57-UNC-20
"Bayou" Coll. - RAS Sale 843 2/27/02, Lot 834 - \$12,000
RAS Sale 869, 11/15/2003, lot 3045 \$11,000
Hoffman Coll., RAS Sale 956, 5/8/2008, lot 60 \$20,000
PFC 1114 "Genuine"
PFC 29675 "Genuine"
PFC 378057 - "small closed tear at T.R. center"

SIEGEL AUCTION GALLERIES

CENSUS OF 5-CENT BROWN, FIRST DESIGN (SCOTT 57)

SPECIAL NOTE: There are many United States stamps that look similar to the rarities listed below. Some of the differences between expensive rarities and common stamps can be subtle, including differences in perforation, shade and size. These stamps should have certificates from a recognized expertizing committee, such as The Philatelic Foundation or P.S.E. If you think you have one of these rarities, we cannot help you until after it has such a certificate.



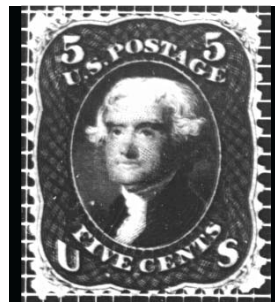
57-OG-21
 RAS 1997 Rarities, Lot 97
 Lyons Coll. - SPG 1/21/2000, Lot 55 - \$8,500
 Lake Shore Coll., RAS Sale 888, 12/7/2004, lot 69 - \$11,500
 PFC 1554 "Genuine"
 PFC 200858 "Genuine, Part O.G."



57-UNC-22
 PFC 9671 "Genuine, no gum"
 PFC 11011 "Genuine, no gum, tiny tear at top right"



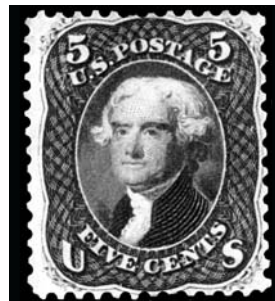
57-UNC-23
 PFC 115477 "Genuine tiny thin"



57-OG-24
 PFC 35171 "Genuine, Part O.G."



57-OG-25
 PFC 177415 "Genuine, Previously Hinged, small corner crease at T.L."



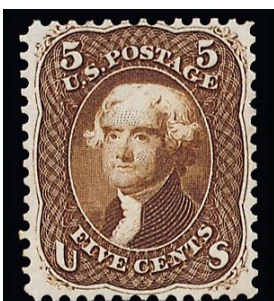
57-UNC-26
 228333 "Genuine, small repair at R., slightly toned at T."



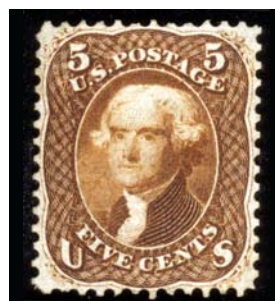
57-OG-27
 275256 "Genuine, Previously Hinged, with small closed tear at T.R."



57-OG-28
 289315 "Genuine with two small repairs and minor surface scrapes"



57-UNC-29
 RAS 1967 Rarities, Lot 30
 Seymour Coll. - RAS 4/23/1970
 Zoellner Coll. - RAS Sale 804, 10/9/1998, Lot 164 - \$10,000
 PFC 53913 "Genuine"



57-CAN-30
 Concord Coll. - RAS 5/19/1994, Lot 87 - \$3,250
 PFC 15601 "Genuine thin spot"

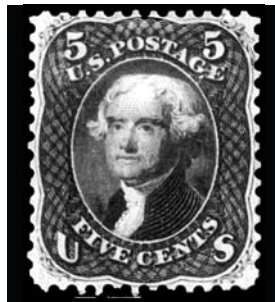
SIEGEL AUCTION GALLERIES

CENSUS OF 5-CENT BROWN, FIRST DESIGN (SCOTT 57)

SPECIAL NOTE: There are many United States stamps that look similar to the rarities listed below. Some of the differences between expensive rarities and common stamps can be subtle, including differences in perforation, shade and size. These stamps should have certificates from a recognized expertizing committee, such as The Philatelic Foundation or P.S.E. If you think you have one of these rarities, we cannot help you until after it has such a certificate.



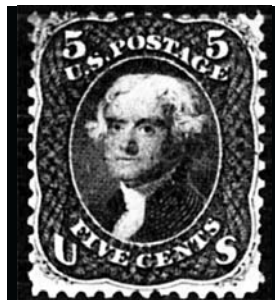
57-UNC-31
 E. Klein 3/8/1940 "no gum"
 PFC 3466 "Genuine but torn"



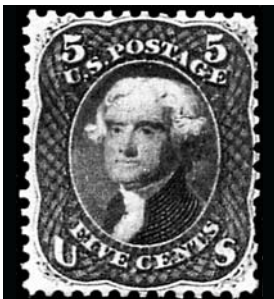
57-UNC-32
 PFC 272517 "Genuine with a small
 toned spot at TL"



57-OG-33
 Miller Coll., NYPL



57-OG-34
 Caspary Coll. - HRH 11/19/1956
 "tiny faults"



57-OG-35
 Lessin Coll. - SPG 5/31/2002, Lot 100
 - \$9,500
 PFC 325082 "Genuine previously
 hinged with redistributed o.g., a perf
 tip added at T.L. and small stains
 removed"