

SIEGEL AUCTION GALLERIES

CENSUS OF ONE-CENT INDIGO, FIRST DESIGN (SCOTT 55)

SPECIAL NOTE: There are many United States stamps that look similar to the rarities listed below. Some of the differences between expensive rarities and common stamps can be subtle, including differences in perforation, shade and size. These stamps should have certificates from a recognized expertizing committee, such as The Philatelic Foundation or P.S.E. If you think you have one of these rarities, we cannot help you until after it has such a certificate.



55-OG-01
 HRH 11/19/56 Caspary
 RAS 1985 Rarities, lot 108
 RAS 2/24/88 Cole
 RAS Sale 851, lot 61 Drucker
 PFC 191688 - "Genuine PH"



55-UNC-02
 RAS 10/27/65 with U.R. perfs trimmed
 Ivy 5/6/1986 lot 154 Hewitt Coll.
 PFC 6000 "Genuine #55"
 PFC 108414 "Genuine with trace of gum"



55-OG-03
 RAS 2/2/67 Lilly
 RAS 4/30/1970, lot 70 Seymour
 RAS 1991 Rarities lot 360
 PFC 1695 "Genuine"



55-OG-04
 35820 "Genuine"



55-UNC-05
 RAS 1/6/72 "Serious defects spacefiller"



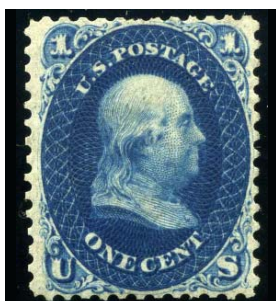
55-OG-06
 HR 5/26/43 Green Coll.
 RAS 4/27/1966 Ambassador Coll.
 SPG 5/30/2003 Chapin (tear not described, with older cert. only)
 PFC 1447 "Genuine"
 PFC 240992 "Genuine, PH, tiny tear at top"




55-OG-07
 RAS 3/27/74 as sound
 Superior 10/26/1992 McNall
 "small sealed tear"
 PFC 9669 "Genuine, O.G."
 PFC 259585 "Genuine, PH, small closed tear at B.L."



55-UNC-08
 DFK 8/16/73
 PFC 40284 "tiny tear at top and left, no gum"



55-OG-09
 RAS 6/18/64 with s.e. at R.
 RAS 5/2/73 reperfed at R.
 Newport Coll., PRW 5/2008
 PFC 19600 "Genuine with O.G."
 PFC 460719 "Genuine, PH, reperfed at right"



55-OG-09
 before reperforating



55-UNC-10
 RAS 2/24/65
 RAS 5/23/1973 Mielstrup
 RAS Sale 818, 12/13/1999, lot 489
 PFC 77000 "Genuine"

SIEGEL AUCTION GALLERIES

CENSUS OF ONE-CENT INDIGO, FIRST DESIGN (SCOTT 55)

SPECIAL NOTE: There are many United States stamps that look similar to the rarities listed below. Some of the differences between expensive rarities and common stamps can be subtle, including differences in perforation, shade and size. These stamps should have certificates from a recognized expertizing committee, such as The Philatelic Foundation or P.S.E. If you think you have one of these rarities, we cannot help you until after it has such a certificate.



55-OG-11
 RAS 11/14/73 "partly nibbed perf"
 SPG 5/31/2002 Lessin
 PFC 43676 "Genuine"
 PFC 213811 "Genuine, PH"



55-UNC-12
 RAS 11/29/72



55-OG-13
 RAS Sale 804, 10/8/1998 Zoellner
 PFC 2501 "OK #55"



55-OG-14
 DFK 4/79
 PFC 637 "Genuine"
 PFC 69311 "Genuine with a tiny thin spot in T.L. margin"



55-OG-15
 RAS 1981 Rarities
 RAS 1986 Rarities
 RAS 1994 Rarities (Concord)
 PFC 161484 "Genuine, PH"



55-UNC-16
 PFC 3256 "OK but defective"



55-CAN-17
 RAS 1992 Rarities
 RAS Sale 888, 12/17/2004 Lake Shore
 1943 APS cert "Genuine, experimental cancel"
 PFC 255459 "Genuine not an experimental cancellation"
 PFC 354715 "Genuine decline opinion as to what the cancel represents"



55-CAN-18
 RAS 1994 Rarities (Concord)
 PFC 15600 "Genuine slight thin spot"



55-UNC-19
 RAS 1987 Rarities
 RAS Sale 843, 2/27/2002 "Bayou"
 RAS Sale 869, 11/15/2003
 RAS Sale 956 5/8/2008 Hoffman
 PFC 29674 "Genuine, no gum"
 PFC 378056 "Genuine, pulled perf at top left"



55-OG-20
 RAS 3/23/71
 111390 "Genuine"

SIEGEL AUCTION GALLERIES

CENSUS OF ONE-CENT INDIGO, FIRST DESIGN (SCOTT 55)

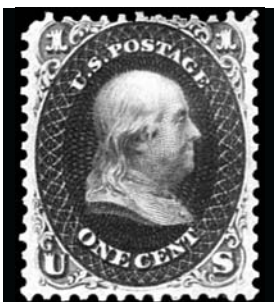
SPECIAL NOTE: There are many United States stamps that look similar to the rarities listed below. Some of the differences between expensive rarities and common stamps can be subtle, including differences in perforation, shade and size. These stamps should have certificates from a recognized expertizing committee, such as The Philatelic Foundation or P.S.E. If you think you have one of these rarities, we cannot help you until after it has such a certificate.



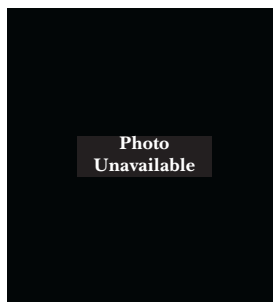
55-OG-21
SPG 10/17/2003 Dr. Claiborne Johnson Jr.
PFC 115476 "Genuine with tiny thin spot"
PFC 257251 "Genuine with tiny thin at T."



55-OG-22
RAS 5/86 Isleham
SPG 5/8/1998 Weissman
SPG 10/23/2001 Floyd
PFC 256556 "Genuine, PH"



55-UNC-23
PFC 275254 "Genuine with small thin at center, no gum"



55-OG-24
Miller Coll., NYPL