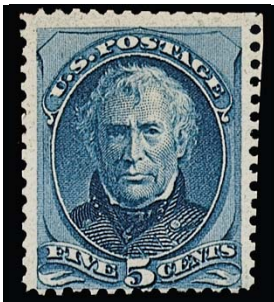
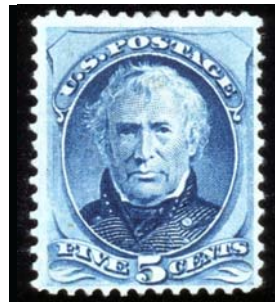


SIEGEL AUCTION GALLERIES
CENSUS OF 5-CENT CONTINENTAL SPECIAL PRINTING (SCOTT 181)

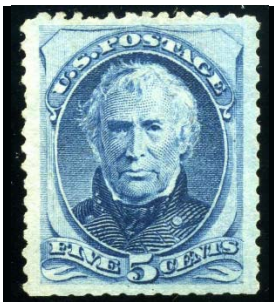
SPECIAL NOTE: There are many United States stamps that look similar to the rarities listed below. Some of the differences between expensive rarities and common stamps can be subtle, including differences in perforation, shade and size. These stamps should have certificates from a recognized expertizing committee, such as The Philatelic Foundation or P.S.E. If you think you have one of these rarities, we cannot help you until after it has such a certificate.



181-UNC-01
Zoellner Coll. - RAS Sale 804,
10/9/98 Lot 379 - \$25,000
PFC 5437 "Genuine"
PFC 72453 "Genuine"



181-UNC-02
Ambassador - RAS 4/27/1966
RAS 4/29/1981
Hewitt Coll. - Ivy 5/26/1986
Concord Coll. - RAS 5/19/1994,
Lot 184 - \$35,000
Floyd Coll. - SPG 10/23/2001,
Lot 319 - \$80,000
PFC 31479 "Genuine"
PFC 134946 "Genuine"
Signed "W.H.C." (Colson)



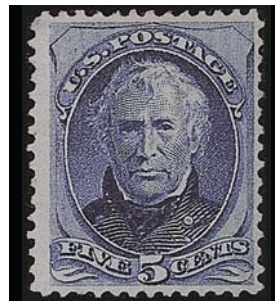
181-UNC-03
Engel - Corinphila 5/30/1975
Newport Coll., PRW 5/2008
PFC 11511 "Genuine"
PFC 50294 "Genuine"
PFC 460763 "Genuine"
Signed "W.H.C." (Colson)



181-UNC-04
RAS 1/25/1983, Lot 819
SPG 10/18/2002 - \$115,000
PFC 48853 "Genuine"
PFC 115451 "Genuine"
PFC 220849 "Genuine"



181-UNC-05
PF 74676 "Genuine"



181-UNC-06
Isleham, RAS 5/25/1986 "trivial
corner thin" - \$16,500
McNall Coll. - Sup. 10/26/1992,
Lot 264 "sm. thin & toned"
Lyons Coll. - SPG 1/21/2000,
Lot 201 described as on
certificate- \$47,500
PFC 259698 "Genuine" with a
small thin at top left and toned



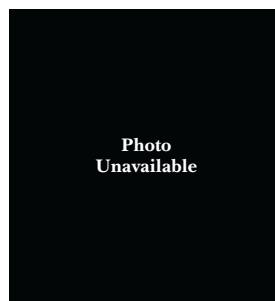
181-UNC-07
PFC 246 "Genuine"
PFC 214602 "Genuine"



181-UNC-08
PFC 3771 "Genuine"



181-UNC-09
Caspary - HRH 11/21/1956
Lilly Coll. - RAS 2/26/1967, Lot
291 - \$7,500
Cole Coll., RAS 2/26/1988
Weisman, SPG 5/8/1998 - \$42,500
PFC 23887 "Genuine"
PFC 192323 "Genuine"
PFC 326747 "Genuine"



181-UNC-10
Miller Coll., NYPL