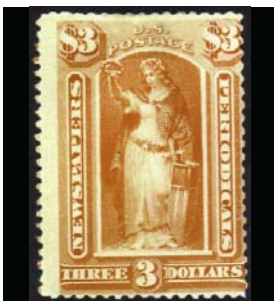


SIEGEL AUCTION GALLERIES

CENSUS OF \$3 SCARLET, NEWSPAPER (SCOTT PR100)

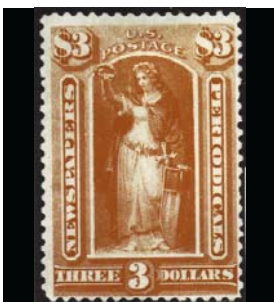
SPECIAL NOTE: There are many United States stamps that look similar to the rarities listed below. Some of the differences between expensive rarities and common stamps can be subtle, including differences in perforation, shade and size. These stamps should have certificates from a recognized expertizing committee, such as The Philatelic Foundation or P.S.E. If you think you have one of these rarities, we cannot help you until after it has such a certificate.



PR100-OG-01
 PFC 24435 Genuine, top left corner creased"
 PFC 280756 "Genuine, previously hinged, sealed tear at top left"



PR100-OG-02
 PFC 225357 "Genuine, previously hinged, heavy thin spot and faint creasing"



PR100-OG-03
 PFC 25636 "Genuine"
 PFC 259929 "Genuine, previously hinged"
 PFC 391694 "Genuine, previously hinged"



PR100-OG-04
 PFC 115498 "Genuine, previously hinged, thin spot"



PR100-OG-05
 PFC 59371 "Genuine, previously hinged"



PR100-OG-06
 PFC 385482 "Genuine, previously hinged"



PR100-OG-07
 RAS 1980 Rarities
 Whitpain Coll., RAS 12/2009
 PFC 76400 "Genuine, previously hinged, reperfed at right"



PR100-OG-08
 RAS 1974 Rarities
 Kotanchik Coll., MBA 2/2004
 PFC 42846 "Genuine, thin at top right"
 PFC 393999 "Genuine, previously hinged, small thin spot at top right"



PR100-UNC-09
 PFC 54669 "Genuine, thin and a tear" (gum not specified)



PR100-UNC-10
 PFC 104849 "Genuine thinned" (gum not specified)

SIEGEL AUCTION GALLERIES

CENSUS OF \$3 SCARLET, NEWSPAPER (SCOTT PR100)

SPECIAL NOTE: There are many United States stamps that look similar to the rarities listed below. Some of the differences between expensive rarities and common stamps can be subtle, including differences in perforation, shade and size. These stamps should have certificates from a recognized expertizing committee, such as The Philatelic Foundation or P.S.E. If you think you have one of these rarities, we cannot help you until after it has such a certificate.



PR100-UNC-11
PFC 1419 "Genuine" (gum not specified)