

# SIEGEL AUCTION GALLERIES

## CENSUS OF 90-CENT BLUE, FIRST DESIGN (SCOTT 62)

SPECIAL NOTE: There are many United States stamps that look similar to the rarities listed below. Some of the differences between expensive rarities and common stamps can be subtle, including differences in perforation, shade and size. These stamps should have certificates from a recognized expertizing committee, such as The Philatelic Foundation or P.S.E. If you think you have one of these rarities, we cannot help you until after it has such a certificate.



**62-UNC-01**  
 Cole Coll. - RAS 2/24/1988  
 Drucker Coll. - RAS Sale 851,  
 10/9/2002, Lot 66 - \$25,000  
 PFC 9676 "Genuine, no gum"  
 PFC 191701 "Genuine"  
 ?? 2002 PFC "Genuine"



**62-OG-02**  
 Fifield 10/29/1957  
 PFC 8256 "Genuine"



**62-OG-03**  
 Ambassador Coll. - RAS  
 4/27/1966, Lot 85 "slightly  
 rounded corner perf"  
 "Bayou" Coll. - RAS Sale 843  
 2/27/02, lot 842 (tiny thin  
 spot) - \$26,000  
 PFC 5498 "Genuine, o.g."



**62-UNC-04**  
 Isleham Coll. - RAS 5/1986  
 Zoellner Coll. - RAS Sale 804,  
 10/9/1998, Lot 169 - \$30,000  
 PFC 163932 "Genuine"



**62-OG-05**  
 Lilly Coll. - RAS 2/2/1967  
 Seymour Coll. - RAS 4/23/1970  
 Isabelle Lessmann Coll. - RAS  
 9/12/1984, Lot 90  
 McNall Coll. - Sup. 10/26/1992  
 PFC 1693 "Genuine"  
 PFC 38692 "Genuine, PH"



**62-UNC-06**  
 J. Fox 6/30/1964  
 Dr. Claiborne Johnson Jr. Coll.-  
 SPG, 10/17/2003 - \$8,500  
 PFC 6250 "Genuine, reperfed  
 at L."



**62-OG-07**  
 Lilly Coll. - RAS 2/7/1968 "few  
 perfs bit blunt & negligible  
 tiny corner creases"  
 Mielstrup Coll. - RAS 5/2/1973,  
 Lot 126 tiny flaws"  
 Newport Coll. - PRW 5/2008  
 PFC 27418 "Genuine, soiled,  
 part O.G."  
 PFC 460724 "Genuine, part o.g.,  
 small corner crease at bottom  
 left and pulled perf at bottom"



**62-OG-08**  
 RAS 4/4/1979  
 PFC 40236 "Genuine, O.G.,  
 tiny tear at left"



**62-OG-09**  
 Green Coll. - Costales 2/18/1946  
 (pulled perf at T.)  
 Gleysteen Coll. - Mozian  
 2/23/1972, Lot 106 (as sound)  
 HRH 10/3/1973 (as sound)  
 Lessin Coll. - SPG 5/31/2001,  
 Lot 106 -  
 \$43,500 (sound)  
 PFC 36512  
 "Genuine"



*Perfs as they appear  
 in Green Coll.*



**62-UNC-10**  
 RAS 4/11/1978  
 SPG 10/18/2002, Lot 81 -  
 \$12,000  
 PFC 43677 "Genuine, no gum,  
 tear, small thin spot at top"

# SIEGEL AUCTION GALLERIES

## CENSUS OF 90-CENT BLUE, FIRST DESIGN (SCOTT 62)

SPECIAL NOTE: There are many United States stamps that look similar to the rarities listed below. Some of the differences between expensive rarities and common stamps can be subtle, including differences in perforation, shade and size. These stamps should have certificates from a recognized expertizing committee, such as The Philatelic Foundation or P.S.E. If you think you have one of these rarities, we cannot help you until after it has such a certificate.



**62-UNC-11**  
RAS 3/23/1972 "microscopic split in one perf" (considered sound in census)



**62-UNC-12**  
RAS 4/29/1981  
Weissman Coll. - SPG 5/8/1998,  
Lot 1040 - \$16,000  
PFC 257255 "Genuine, no gum"



**62-CAN-13**  
PFC 2040 "Genuine, trial cancel, defects"



**62-UNC-14**  
PFC 2105 "Genuine, cleaned"  
  
(Photo damaged, not the stamp)



**62-OG-15**  
Caspary Coll. - HRH 11/19/1956  
PFC 37165 "Genuine, small tear and corner margin crease"



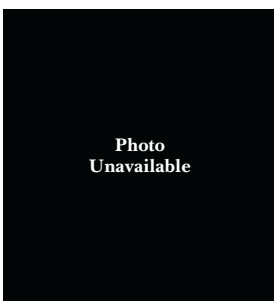
**62-UNC-16**  
Caspary Coll. - HRH 11/19/1956  
Concord Coll. - RAS 5/19/1994,  
Lot 85 - \$24,000  
Floyd Coll. - SPG 10/23/2001,  
Lot 125 - \$55,000  
PFC 116325 "Genuine"



**62-UNC-17**  
PFC 223969 "Genuine, extensively repaired with portions of design added, including identifying characteristics"



**62-OG-18**  
275261 "Genuine, PH, light diagonal crease at T.L., small hole in L.R. "90"



**62-OG-19**  
Miller Coll., NYPL  
Short perf



**62-UNC-20**  
Green Coll. - HR 5/26/1943  
(set signed Luff)  
PFC 15606 "Not 62, but 62a privately perforated" (this is likely incorrect)

SIEGEL AUCTION GALLERIES  
CENSUS OF 90-CENT BLUE, FIRST DESIGN (SCOTT 62)

SPECIAL NOTE: There are many United States stamps that look similar to the rarities listed below. Some of the differences between expensive rarities and common stamps can be subtle, including differences in perforation, shade and size. These stamps should have certificates from a recognized expertizing committee, such as The Philatelic Foundation or P.S.E. If you think you have one of these rarities, we cannot help you until after it has such a certificate.



**62-UNC-21**  
Green Coll. - Barr 4/17/1945  
"s.e. at R., slight closed tear  
at B."



**62-UNC-22**  
Regency/Superior auction,  
8/5/2005, lot 1115 - \$13,500  
PFC 429342 "Genuine, small  
thin spots, two tiny tears, and  
reperforated at right"  
APS 113383 "Genuine, creased,  
thinned, sealed tears, nibbed  
corner perf