

# SIEGEL AUCTION GALLERIES

## CENSUS OF 12-CENT BLACK, FIRST DESIGN (SCOTT 59)

SPECIAL NOTE: There are many United States stamps that look similar to the rarities listed below. Some of the differences between expensive rarities and common stamps can be subtle, including differences in perforation, shade and size. These stamps should have certificates from a recognized expertizing committee, such as The Philatelic Foundation or P.S.E. If you think you have one of these rarities, we cannot help you until after it has such a certificate.



**59-UNC-01**  
RAS 1981 Rarities "light crease, small perf & margin faults" \$15,000  
PFC 58413 "Genuine with vertical crease"



**59-CAN-02**  
Hale Coll. - Sanabria 5/8/1939  
Lake Shore Coll., RAS Sale 888, 12/7/2004, lot 70 - \$25,000  
PFC 82201 "Genuine with horiz. crease and pen written 'New' marking"



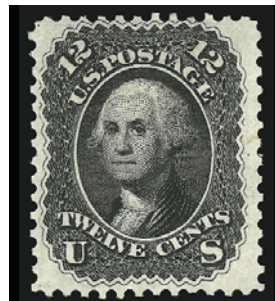
**59-OG-03**  
Moody Coll. - HRH 1/21/1958  
Ambassador Coll. - RAS 4/27/1966, Lot 81 "few perf tips blunted"  
RAS 1977 Rarities - \$25,000  
RAS 1983 Rarities - \$29,000  
McNall Coll. - Sup. 10/26/1992, Lot 96 "tiny thin"  
PFC 259588 "Genuine, PH, with a tiny thin at T.L."



**59-OG-04**  
Caspary Coll. - HRH 11/19/1956  
SPG 10/18/2002, Lot 78 - \$32,500  
PFC 192327 "Genuine, PH, with faint diagonal crease"



**59-UNC-05**  
HR 3/23/1954  
PFC 31935 "Genuine, defective & repaired by closing a tear and adding a piece at B."



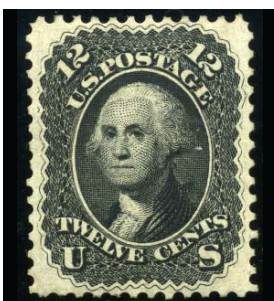
**59-UNC-06**  
RAS 4/28/1981  
"Bayou" Coll. RAS Sale 843 2/27/02, Lot 840 - \$60,000



**59-UNC-07**  
E. Klein 3/8/1940  
RAS 1987 Rarities "o.g., crease, short perf" - \$20,000  
PFC 639 "Genuine"  
PFC 29677 "Genuine with light vertical crease and regummed"



**59-OG-08**  
RAS 10/6/1964  
RAS 1969 Rarities "few perfs blunted" - \$19,000  
PFC 15603 "Genuine with tiny thin spot"



**59-OG-09**  
RAS 1972 Rarities - \$23,000  
Newport Coll., PRW 5/2008  
PFC 21696 "Genuine"  
PFC 460721 "Genuine, slightly disturbed o.g."



**59-OG-10**  
Lilly Coll. - RAS 2/2/1967, Lot 128  
Seymour Coll. - RAS 4/23/1970  
PFC 1696 "Genuine"

# SIEGEL AUCTION GALLERIES

## CENSUS OF 12-CENT BLACK, FIRST DESIGN (SCOTT 59)

SPECIAL NOTE: There are many United States stamps that look similar to the rarities listed below. Some of the differences between expensive rarities and common stamps can be subtle, including differences in perforation, shade and size. These stamps should have certificates from a recognized expertizing committee, such as The Philatelic Foundation or P.S.E. If you think you have one of these rarities, we cannot help you until after it has such a certificate.



**59-OG-11**  
 RAS 1969 Rarities - \$19,000  
 RAS 1971 Rarities - \$20,000  
 Isabelle Lessmann Coll. - RAS  
 12/12/1984, Lot 88 - \$32,500  
 Hewitt Coll. - Ivy 5/26/1986  
 Concord Coll. - RAS 5/19/1994,  
 Lot 82 - \$32,500 "two partly  
 nibbed perfs at B."  
 PFC 35930 "Genuine"



**59-OG-12**  
 Green Coll. - HR 5/26/1943  
 Gleysteen Coll. - Mozian  
 2/23/1972, Lot 102 "o.g."  
 RAS 1991 Rarities "trivial thin"  
 \$29,000  
 PFC 213829 "Tiny tear at R.,  
 small thin"  
 PFC 270161 "Small closed tear  
 T.R., two tiny tears at T."



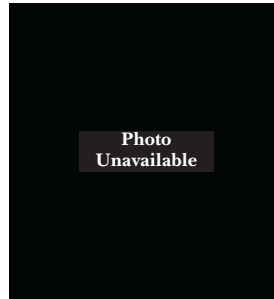
**59-OG-13**  
 RAS 1974 Rarities "Part o.g." -  
 \$15,500  
 Lutwak Coll. - DFK 1/20/1988,  
 Lot 710 (sound)  
 Lessin Coll. - SPG 5/31/2002,  
 Lot 103 (as sound) - \$33,500  
 SPG 3/7/2003, Lot 108 (small  
 surface scrape at B.) - \$28,000  
 PFC 11320 "Genuine"  
 PFC 52316 "Genuine"  
 2002 PFC - sm. scrape at B.



**59-UNC-14**  
 Isleham Coll. - RAS 5/1986  
 "some perf faults, tiny tear at  
 top"



**59-OG-15**  
 Zoellner Coll. - RAS Sale 804,  
 10/9/1998, Lot 166 - \$65,000  
 PFC 275258 "Genuine, PH"



**59-OG-16**  
 Miller Coll., NYPL