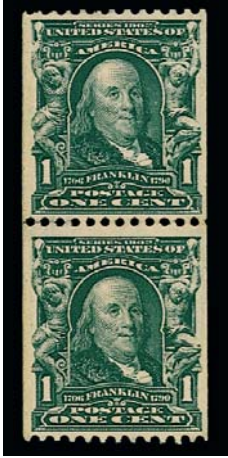


SIEGEL AUCTION GALLERIES
CENSUS OF ONE-CENT 1908 ISSUE VERTICAL COIL (SCOTT 316)

SPECIAL NOTE: There are many United States stamps that look similar to the rarities listed below. Some of the differences between expensive rarities and common stamps can be subtle, including differences in perforation, shade and size. These stamps should have certificates from a recognized expertizing committee, such as The Philatelic Foundation or P.S.E. If you think you have one of these rarities, we cannot help you until after it has such a certificate.



316-OG-PR-01
Engel Coll. - Corinphila 5/25/1975
(as strip of three with
316-OG-02
McNall Coll. - Sup. 10/26/1992,
Lot 388 (as pair)
Zoellner Coll. - RAS Sale 804,
10/8/1998, Lot 524 - \$80,000
PFC 14499 "Genuine coil strip
of three" (top pair)
PFC 259765 "Genuine
previously hinged"



316-OG-02
PFC 14499 "Genuine coil strip
of three" (bottom stamp)
PFC 178931 "Genuine, PH"
PFC 301071 "Genuine
previously hinged"



316-OG-PR-03
Grubin Coll. - RAS 11/30/1971
RAS 1993 Rarities - \$70,000
Floyd Col. - SPG 10/23/2001,
Lot 542 - \$150,000
PFC 26482 "Genuine Coil Pair"
PFC 279453 "Genuine PH"



316-OG-PR-04
RAS 1981 Rarities - \$5,750
PFC 58276 "Genuine, small
tear in R. margin of B. stamp,
pinhole in L. margin of T.
stamp"



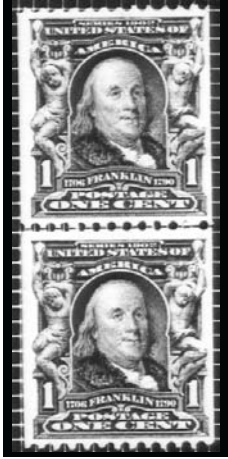
316-OG-PR-05
Agris Coll. - SPG 9/5/1997
PFC 6289 "Genuine coil pair"
PFC 109845 "Genuine"
PFC 319574 "Genuine, PH"



316-OG-PR-06
PFC 8666 "Genuine coil pair"

SIEGEL AUCTION GALLERIES
CENSUS OF ONE-CENT 1908 ISSUE VERTICAL COIL (SCOTT 316)

SPECIAL NOTE: There are many United States stamps that look similar to the rarities listed below. Some of the differences between expensive rarities and common stamps can be subtle, including differences in perforation, shade and size. These stamps should have certificates from a recognized expertizing committee, such as The Philatelic Foundation or P.S.E. If you think you have one of these rarities, we cannot help you until after it has such a certificate.



316-OG-LP-07
PFC 1720 "Genuine"
PFC 81094 "Genuine"



316-OG-PR-08
Hoffman Coll., RAS S956,
5/8/2008, lot 300 - \$230,000
PFC 12616 "Genuine coil pair"
PFC 407193 "Genuine PH"



316-OG-PR-09
RAS 1985 Rarities, Lot 269
"minor h.r. and hinge
reinforcement" - \$27,000
PFC 14193 "Genuine coil pair"
PFC 148882 "Genuine, tiny
thin spot at B."



316-OG-LP-10
Newport Coll., PRW 5/2008
PFC 14513 "Genuine"
PFC 48933 "Genuine"
PFC 460784 "Genuine, previously
hinged, top stamp with tiny
surface scuff in the margin at
top center"



316-OG-LP-11
RAS 1977 Rarities - \$7,000
RAS 1981 Rarities - \$12,000
Hewitt Coll. - Ivy 5/26/1986
RAS 1987 Rarities - \$16,500
RAS 1995 Rarities - \$54,000
Brody Coll. - SPG 12/6/2002,
Lot 89 - \$65,000
PFC 100616 "Genuine stamps
rejoined and tiny corner
crease at B.R."



316-OG-PR-12
PFC 53722 "Genuine paste-up
pair"
PFC 224560 "Genuine paste-up
pair"

SIEGEL AUCTION GALLERIES
CENSUS OF ONE-CENT 1908 ISSUE VERTICAL COIL (SCOTT 316)

SPECIAL NOTE: There are many United States stamps that look similar to the rarities listed below. Some of the differences between expensive rarities and common stamps can be subtle, including differences in perforation, shade and size. These stamps should have certificates from a recognized expertizing committee, such as The Philatelic Foundation or P.S.E. If you think you have one of these rarities, we cannot help you until after it has such a certificate.



316-OG-PR-13
PFC 16284 "Genuine with second and third perfs at T. torn"
PFC 149443 "Genuine small tear at R."